

THE LINK

[Contents](#)



THE UNITED PARISH OF
HOLY TRINITY, ABBOTS LEIGH
WITH
ST MARY-THE-VIRGIN, LEIGH WOODS
www.theparishchurch.com

OCTOBER 2020

70p

Contents

Paying for your Link	see below
Rev. Hester Jones's letter	page 3
Family News / Time Out / Street Pastors	page 4
Abbots Leigh/Pill Neighbourhood Plan / Teatime Special	page 5
WI / Where's The Link? / All Souls / AL Village Hall / FOOD BANK / Abbots Pool	p6
Abbots Leigh Civic Society / Abbots Pool Work Party	page 7
Leigh Woods Society / AL Covid-19 Support / Farm Wilder - Green Meat!	page 8-9
Abbots Leigh PC / Planning / Rubbish / Police	page 10-11
Church Services / Pew News / A Tale of Wo	page 12
ZOOM Host Wanted / 2020 Shoeboxes / Welcome Pack	page 13
Adrian's Recipe of the Month:/ Mobile Library / Village Agent	page 14
Small Ads / Helping Hands ad	page 15
Advertisers: Page 16 : Sprague Gibbons/Chimney Sweep/Decorator.	
Page 17 Chiropractor/Nursing Home/ Builder. Page 18 Accountant/Builder	
Page 19 Boiler system/Computer aid/AL Village Hall. Page 20 Clifton High/Incastone	
Page 21 Logs/Swim School/Oven clean/Yoga Page 22 Garage/IFA	
Page 23 Solicitor/Osteo/Grounds&Garden/Printing	
Page 24 Brackenwood Garden Centre/ Lawyers	

Paying for The Link

To all those who would ordinarily have made your donation towards the Link for the year by now but due to these unusual circumstances have not done so as yet.

Could you either please give your donation to your normal deliverer who will I am sure deliver it to myself or make arrangements for me to collect it from themselves OR you can now make BACS payments to

United Parish of Abbots Leigh with Leigh Woods:

Sort code 40-52-40 Account no 00010334

Many thanks, The Link Team

United Parish Website www.theparishchurch.com

Leigh Woods Website www.leighwoods.org

Abbots Leigh Village Website www.abbotsleigh.org.uk

Editor: David B Davies, The Summer House, 51a Dial Hill Rd., Clevedon, BS21 7EW.

01275 873167 / 07814 074311 daviddavies512@gmail.com

Advertisements: Robert Narracott, Trinity House, Harris Lane Abbots Leigh BS8 3QX

01275 375619

robert.narracott@gmail.com

Copy deadline: 17th of month before publication

Distribution: Abbots Leigh: Martin Walker 01275 374177 kitsilano70@hotmail.com

Leigh Woods: Mark Rayson 0117 973 1842 mark@mrconsulting.biz

Church Postcodes (for Wedding & Funeral visitors):-

Holy Trinity, Abbots Leigh BS8 3QU; St Mary's, Leigh Woods BS8 3PG

VICAR: Rev. Dr. HESTER JONES – 01275 219838

[Contents](#)

PARISH ADMINISTRATOR: ELIZABETH ENGLAND

Tel: 01275 373996 Email: admin@theparishchurch.com

Hester is a part-time Vicar. **PLEASE CONTACT** Elizabeth with enquiries for Baptism, Banns, Weddings etc., and news of newcomers to the parish. If you have information about those who are ill, at home or in hospital, who would like to be visited, please contact our PASTORAL TEAM, Co-ordinator Alan Shellard, 0117 974 1494, alanshellard@gmail.com

PAROCHIAL CHURCH COUNCIL WEBSITE:

www.theparishchurch.com

Keep up-to-date on the events and highlights of our united parish.

Organist: John Talbot 0117 942 8344

ABBOTS LEIGH CHURCHWARDENS

Victoria Dominey 01275 372234

Helen Cornish 01275 374521

LEIGH WOODS CHURCHWARDENS

Michael Bothamley 0117 973 0072

DEPUTIES

Alan Shellard 0117 974 1494

Ginny Owen
(Sacristan) 0117 973 3305

TREASURERS

Carole Nicholls 01275 373888

Barry England 01275 372777

United Parish Treasurer: Siân Narracott sian.narracott@goolemail.com 01275 375619

Dear Friends,

As I write this, it looks as if we are heading into a second phase of semi or wider lockdown. Schools have reopened and students are now poised to return to universities across the country. With its beautiful, unseasonably warm weather, September has felt a little like the calm before the storm, though we hope and pray that the storm of infection will abate. I sense a tide also of some mutual recrimination between younger and older members of society. As the Brexit debate returns to our screens too, division, after the pulling together of earlier lockdown, seems to be growing again.

Sir David Attenborough recently spoke with wisdom and challenge to us all, whatever our age or situation, inviting us to work together to stem the tide of global extinction of wildlife, whose demise is linked in some regards to some of the problems we face today. As people who love this world, whether we are regular worshippers or more loosely 'fellow travellers', hoping to share this beautiful planet with one another as well as we can, it's our task not only to keep ourselves safe and healthy, but to look out for other creatures in how we live. The end of September and the beginning of October bring environment Sunday, and then the day dedicated to Francis of Assisi, with his example of peaceful and restorative living alongside animals, as with the poor, the sick and the disadvantaged. Let us also do what we can in this place, to share a little of his peace, joy and renewed life, with those around and with those in need, whoever and whatever they may be.

Go well this month, and with love,

Hester

FAMILY NEWS

[Contents](#)

BAPTISMS: 27.09.20 Harry Heffernan Holy Trinity Abbots Leigh

WEDDINGS: None

FUNERALS: None



Keeping in contact by email, If you want to join the email group please let Gill know
Time Out is a Women's group, of mixed ages, well rather older than we were when we first set up, with lively minds. We live or have connection with Leigh Woods / Abbots Leigh. We have a mixed program of meet ups about once a month. New members always welcome.

More info, or to go on email list and/or WhatsApp group, contact

Gill Ogden 01275 602657 gillm.ogden@gmail.com

STREET PASTORS

Bristol late on a Saturday night is a different world. A crowded place, filled with mostly young people enjoying themselves. But not all of them do. Some have had too much to drink and fall over. Some get excluded from clubs, lose their friends, run out of 'phone battery, and find themselves lost and unsure where to go in a strange city. They need the Street Pastors. Street Pastors are there to **Listen, Care and Help**.

Street Pastors were introduced to London, in 2003. They are international but have spread to over 500 UK towns and cities. They don't preach or evangelise, but are a Christian organisation, recruiting volunteers from churches of all kinds and seek to spread love by example. Normally a small group patrol the city centre on Saturday nights from 10pm to about 3am. They often start with a briefing from Police, then head out around the City Centre.

Street Pastors wear a uniform, so can be identified on the CCTV covering the whole area, and have a radio connected to Brunel, who run the CCTV and can be asked to look at particular areas, and to contact Police. Corn St., Baldwin St. King St. and the Waterfront are generally busy, but at this time it is mostly greetings (Street Pastors are known to a lot of young people) - and collecting empty bottles.

After midnight, the city centre begins to close, and the patrol goes up Park St. and round the Triangle. Park St. late at night is transformed. Shops are shut and dark; night clubs, dark by day, are bright and noisy spreading barriers along the street for entry queues and smokers. Activity spreads up the hill as the night wears on, and this is where Street Pastors usually encounter need. Often it is water, which we carry, but we also carry plasters, space blankets, flip flops (for girls who can no longer wear high heels), sometimes a 'phone charger, to boost the battery of the lost sheep.

Occasionally an ambulance has to be called, which may mean a wait of over an hour, but most often it is a case of finding a friend to help get the lost sheep to transport or home. Sometimes it is just staying with the person until s/he is sober enough for a taxi. Any of these activities are time consuming, so it is often after 3am by the time we get back to base. Even so, we often go home to friendly greetings and even praise from the people who know the Street Pastors and are pleased to see them out on the street.

Simon Holmes

If you are interested in joining, or can offer financial support, look at
Bristol.streetpastors.org.uk

NEIGHBOURHOOD PLAN – Did you comment?

Consultation on the draft Neighbourhood Plan ended on Saturday 12th September and, with a big rush in the last week, the total number of comments submitted came to 207. Respondents fell into two categories. One category, with 27 responses, came from national bodies such as Historic England, Homes England or Environment Agency, or from organisations with some local presence – the police, fire and health services. Others were particular to the Neighbourhood Area – our churches and voluntary organisations, for example. There were also comments from developers expressing their interest in major schemes of up to 1000 dwellings in the area.

This 'organisational' set in general welcomed the Plan, and made corrections or offered suggestions for clarification, but did not comment at any length on the substance of the Plan.

180 individual responses came both by e-mail (131) and by responses made at the Drop-Ins held on successive Saturday mornings in late August/September (49 responses). Responses varied widely in length and focus. Some addressed a single issue – traffic, environment, climate change, housing - and were only of a few lines, whereas others ran to four or five pages and offered comments both on the Plan as a whole and on one or more specific issues.

A number of responses came from couples or families who sent in comments either signed jointly or as separate individuals. These responses can be broken down into the number of households affected, enabling the results to be looked at in terms of dwellings and households. As a result it is estimated that comments were made by 144 households.

Different parts of our Neighbourhood Area engaged to differing degrees. Responses from Ham Green numbered 42 households, from Abbots Leigh 40, from Pill 34, and from Easton -in Gordano 16 (with the residence of 12 Drop-In respondents unknown).

What happens next?

The Neighbourhood Plan Steering Group will bring together the many comments and will prepare the Consultation Statement required by government legislation which will accompany any submission of a Plan to North Somerset Council. All this would go to the independent Examiner, who will assess the Plan. She might require changes to the Plan and/or approve/reject it. If approved it has to be endorsed by North Somerset Council and will then go to a local referendum. Individual proposals for Orchard View or Chapel Pill Lane would of course require a separate planning application which would offer a further opportunity for public involvement.



Tea Time Special

*Normally meets in the vestry at St Mary's Church Leigh Woods
at 2pm on the 3rd Monday of each month. Inclusive price of £2.50*

**If you are interested in being included in an email group
to keep you updated please contact Gill Ogden**

Gill Ogden 01275 602657 gillm.ogden@gmail.com

ABBOTS LEIGH WOMEN'S INSTITUTE [Contents](#)



We had a lovely meeting on the 8th September. 18 members attended wearing masks and staying 1 metre apart. We had a quiz followed by a hilarious game of Bingo.

Everyone enjoyed catching up with WI news and also hearing of how members are coping.

Lovely to see 2 members who had serious falls during the lockdown period.

Plans were made for a meeting in October, but now with the new '6' rule it will not be happening. We just hope we will have another meeting soon.

Stay safe everyone

Donna

For more details contact: Donna Butcher 01275 375378

Where's The Link? Please tell your friends...

The Link is available on the village website <http://www.abbotsleigh.org.uk/news/>. On www.leighwoods.org it's an item on the Leigh Woods Society page, under Articles and Information. Also on www.theparishchurch.com.

ALL SOULS' SERVICE: REMEMBERING LOVED ONES

If a service in church is not possible or appropriate, we shall revert to Zoom. Please let me know by email or in person of any names you would like us to remember, if you can't attend personally, as it may not be possible or easy to complete a sheet of names as usual. We shall expect to remember in any case those whose Funeral or Burial service has taken place in the parish in the last three years. *Hester*

Abbots Leigh Village Hall. The Village hall is open. Plans are in place to ensure that this can be done safely, with guidance for hirers of the hall. Please contact Julie Smart (01275 374442), John Butler (373446) or John Prodger (374597) caretaker at the Village Hall if you want to make a booking.

FOOD BANK - AS MUCH NEEDED AS EVER

Ten most needed items:

Tinned soup, Tinned Corned beef or Chicken, Tinned Rice Pudding/Custard, Coffee, UHT Fruit juice, Jam, Treats eg Chocolate, Snacks eg crisps etc, Toothpaste, De-odorants. Money donations particularly welcome. *Alan Shellard*

Abbots Pool

The Parish Council are hoping that a Public Space Protection Order which will include a number of bylaws covering activities that are currently published as guidelines under a code of conduct, which could be enforced with the fines being imposed, will be in place in the next few weeks and the Pool Area can be reopened and the parking restrictions removed. It has been very sad that Abbots Pool has had to be closed over the summer and we are hoping that the reputation of the pool area being recognised as the place to party will be forgotten.



This time last year I was predictably late writing my article for The Link. Another copy deadline had been and gone and it was only an email from an exasperated editor that prompted me into action.

I wrote it on my phone during a flight from Bristol to Biarritz, studiously ignoring the unfurling French countryside and the Bay of Biscay as it passed below to pen thanks to those that had helped out or won events at the *Festival in the Field*.

I know it was exactly this time last year because that very phone keeps reminding me. It sends me links to photos and videos taken over the four-and-a-half days a few mates from the village and I took to cycle across the French Pyrenees from Hendaye on the Atlantic Coast to Cerbère on the Mediterranean.

Four-and-a-half days filled with the sweaty endeavour of exhausting climbs up mountain passes, mind-scrambling hours in the saddle and fortunately, plenty of post-ride laughs.

Those photos catalogue the pained faces of friends struggling up the last steep ramp of a 15Km ride up a mountain, followed almost immediately by the ecstatic grinning of those same mates as they make it over the pass. They prompt the reverie of mountain vistas tainted only by steep roads snaking across them and of the hysterical laughter of shared tales of derring-do over dinner.

Those photos are a reminder that the negative moments of doubt - with the brain doing its best to convince the body it has had enough – are comfortably outweighed by the positive. They underline just how we as human beings have an innate ability to override the bad times and get on with enjoying the good.

As coronavirus continues to hold its grip on society its worth remembering that. It's worth reminding ourselves that although life throws challenges at us, we are more than capable of conquering them. There will be an end to the long slog of coping with Covid - and I can't wait for the party when it arrives.

*Paul Thompson, Chair, Abbots Leigh Civic Society
33, Dennyview Road 01275 373 115*

Abbots Pool Working Party

It was decided not to have a working party on Sunday the 21st of September due to people breaking down the fences and using the pool and not wanting to put the volunteers at risk.

As long as there isn't a national lock down we will be having a working party on Sunday 11th Oct. Meet at 10am in the carpark and we will be clearing the paths, clearing the cave, picking litter and generally getting back into the swing.



Jo Chiverton

LEIGH WOODS SOCIETY

[Contents](#)

The local Support Group initiative has brought us closer together. Groups in Abbots Leigh/Leigh Woods comprise of volunteers who live in the area. If you are self-isolating and need support please contact your volunteer in the first instance. Any problems, let the coordinators know. Leigh Woods Support Group is co-ordinated by Gill Dixon and Mark Rayson, who can both be contacted via covid19@leighwoods.org or 0117 973 1842.

Our website www.leighwoods.org has a dedicated COVID19 page with information on issues ranging from health to food and shopping delivery services. It also has advice on cyber security. The criminal community is looking for opportunities in these difficult times, with recent warnings about virus related bogus phone calls and scams. Please look at the website and let us know if there is any information on Leigh Woods you feel it would be helpful to include.

From The Chairman

Battle of Britain Memorial

The 'breaking ground' service for the Battle of Britain memorial took place on Battle of Britain Day, 15th September. The memorial is to be built over the next few months outside the Parish Council office, by the flagpole opposite the old school, on the main road through Long Ashton.

The service was moving, despite lots of passing traffic and cyclists. At least the memorial will be noticed once it's built. It's not only to commemorate fallen airmen but all in the parish who lost their lives in WWII.

Charles (Cave) made a good speech and mentioned funding. I understand from the committee that the budget is £50,000 and they've so far raised north of £30k. As it will represent the fallen of Leigh Woods, I hope we can make a LWS donation following an email to the membership with a drawing that shows what the memorial will look like. The Times today mentioned the last remaining pilot (Group Captain Hemingway, 101) who's still with us, so very much in the news. On a personal note, my step grandfather was a Spitfire pilot, shot down over France. Landed up in Stalag Luft 3 (of the Great Escape and Douglas Bader fame). Crazy, crazy guy. In his memory I will make a small donation.

The Woods

Our end of LW is definitely the default car park for the woods now the Forestry Commission are charging and I think Ashton Court have fixed their parking machines. Of course this means that the NT bit of the wood gets far too many feet bearing down on the paths leading into the woods. Fingers crossed man with measure means that something is happening.

The Church grounds – residents' input welcome!

I met with Mark Rayson, Michael Bothamley, John Sparks and a tree expert a couple of weeks ago. The idea is to spend time and of course money, clearing bracken and undergrowth and manage trees to create spaces for people to use. The phrase 'forest glades' was mentioned. The idea is to encourage the mother & toddler community to use the space and just generally improve the appearance of the church grounds. More details when available. If anyone wants to get involved please put your hand up. The more the merrier.

Alex

Planning:

20/P/1791/TRCA - Nightingales, North Road, BS8 3PL - Leylandii - Fell.

20/P/1800/TRCA - Springhill, Bridge Road, BS8 3PB - T1 & T2 - Lawson Cypress - Fell. T3 - Lawson Cypress - Fell. T4 - Weeping Ash - Fell.

Other than these tree works there were no new planning applications in August.

Rownham Hill Footpath

Wall collapsed onto footpath on Rownham Hill. Footpath shut until wall made safe.

A369 Speed Limit

The Parish Council passed a request to cut the speed limit from 40 to 30mph between the top of Rownham Hill through to Abbots Leigh also install speed activated sign near the junction of North Road and Abbots Leigh Road. Both now await decisions from NSC.

Abbots Leigh Covid-19 community volunteers

Volunteers throughout Abbots Leigh are coordinated to cover groups of neighbours along roads across the Parish. The purpose is to ensure that people have someone to contact should they need help with anything such as picking up shopping, posting mail, urgent supplies or just to talk to someone when they are having to self isolate. If you need help and do not know who your coordinator is, or want further information, contact Mel King on 07876 502951 or Simon Talbot-Ponsonby 07973 147017 or 01275 375250.

Farm Wilder - Turning Red Meat Green

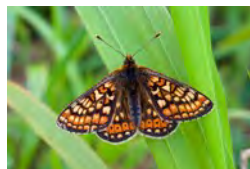
Most of us know the planet is in peril. Climate change and biodiversity loss feel overwhelming, but one step we can all take can make a massive difference - changing the way we eat; not necessarily going vegan, but eating less, more sustainable meat. It was to encourage this that I set up social enterprise Farm Wilder last year.

The media tend to portray all meat as bad, which isn't true, especially on a damp island where grass grows well. Well managed cattle and sheep convert that grass into highly nutritious food, while reducing climate change by sequestering carbon into soil and trees, and maintaining wildflower meadows that support many rare species. So, while we do need to eat about 50% less meat and dairy, we can consume it with a clear conscience as long as it isn't produced intensively and fed on grain.



Farm Wilder meat, from Dartmoor, is about as sustainable as you can get. Our Cuckoo Beef & Lamb is from farms where cuckoos still breed; our Fritillary Butterfly Beef farms have rare Marsh Fritillary butterflies. The farmers are adopting regenerative techniques that restore soil health and wildlife. This goes beyond organic - these farmers don't

feed grains to their animals - instead they eat only grass, herbs, legumes and other natural forage. This kind of red meat is better, for the planet and animal welfare, than most poultry and pork, which comes from factory farms that rely on grains including imported soya. For more information please visit www.farmwilder.org



Buy Farm Wilder meat at Meatbox on Wapping Wharf, or from www.fresh-range.com

Tim Martin

Planning Application Records					
Applic'n no. Date rec'd Target Date	Applicant & Address	Proposal	Parish Council View	NSC status	Officer
20/P/1299/NMA 29-Jun-20	Leigh Warren Bungalow, Abbots Leigh Rd, BS8 3QD	Non-material amend to applic'n 19/P/0734/FUL. To allow for changes to windows on ground floor E & W elev'n & 1st floor dormers on W elevation.	<i>No comments.</i>	<i>Approved</i>	Louise Grover
20/P/1372/FUH 6-Jul-20 24-Aug-20	1 Manor Cotts., Abbots Leigh Rd, BS8 3QG	1-storey extn to rear & 1-storey infill betw. main house & garage. 2-storey side extn. Reconfigure g-floor layout.	<i>No comments.</i>	<i>Approved</i>	Anna Hayes
20/P/1489/FUH 13-Jul-20 26-Aug-20	Hernhill, Manor Lane, BS8 3RU	Demolish porch & decking to main house. Create 1-storey rear extn w new terrace & balcony. Demolish lean-to. Convert garage to studio/ ancillary accommodation to main house	<i>No objection in principle but condition requested: garage not to convert to separate property or become part of a letting business; balcony to be screened for neighbours' privacy.</i>		TBC Charles Cooksley
20/P/1481/FUH 27-Jul-20 14-Sep-20	Tanglewood, Ashgrove Ave., BS8 3QE	Erect 1-storey extns to front & rear of dwelling. Demolish & replacement garage.	TBC		Charles Cooksley
20/P/1496/TPO 3-Aug-20 21-Sep-20	West Gateway, Abbots Leigh Road, BS8 3QB	T1 - Sycamore - Reduce branches around BT lines to give 1.5m clearance. Remove first 4 branches back to main stem marked with orange dot on field side. T3 - Ash - Fell limb leaning towards road marked with orange dot.	TBC		Jason Cox
20/P/1437/FUL 10-Aug-20 21-Sep-20	Leigh Court Farm, Pill Rd, BS8 3RA	Retain timber chalet for farm manager for 5 years or to cessation of farm enterprise.	TBC		Louise Grover
20/P/1882/FUL 17-Aug-20 20-Oct-20	Flat at The Barns, Church Road, BS8 3QU	Demolish existing dwelling & construct replacement.	TBC		TBC

Donald Davies, Pill Ward Councillor, N Somerset Council

The next few months will continue to be difficult for us all with the new regulations and restrictions, but the hope must be that acting more quickly will save jobs and, much more importantly, lives. I'd like to thank all who have worked extremely hard to get our schools reopened and, second, to urge you all to continue to have regard for the social distancing measures we need to keep in place to avoid another peak of infection. For that reason I shan't be holding face-to-face surgeries, but please feel free to contact me with any concerns you have. My phone number is 07900 097671 and my e-mail donald.davies@n-somerset.gov.uk.

Parish Council Meetings The Parish Council is meeting through video links for the foreseeable future. If you wish to raise anything to be discussed at a meeting please contact Julie Smart, Clerk to the PC, in advance of the meeting. Meetings are normally held on the 3rd Monday of the month. The next will be **Monday 19th October** at 7.30pm either via zoom or in the main Village Hall. Agenda & Minutes are on the Village Website.

Abbots Leigh Parish Councillors Simon Talbot-Ponsonby (375250) Chair, Cycle & Footpath Network/Highways/Verges/Recycling & Rubbish/ Skittle Alley/Communications/ Website. **Martin Walker** (219530) Vice Chair/ Public Footpaths/ Old School Field/ Open Spaces/ Abbots Pool/ Transport Links. **John Butler** (373446), Village Hall /Public Relations/Street Lighting. **Murray Stewart** (372878) Community Groups/ Neighbourhood Plan/ Abbots Leigh Charities/ Civic Soc. Liaison. **Robert Narracott** (375619) Planning/ Conservation Area. **Julie Smart Clerk to the Council:** (374442) who works out of the Resource Centre in Pill. Secretariat/Insurance/Police Coordination/Village Orderly.

RECYCLING AND RUBBISH

Check North Somerset council website under waste and recycling for your next collection.



Advice from North Somerset Council continues to be:

Our crews are very busy at the moment. To help keep you and them safe, and to help the crews keep making their collections in good time, there are a few things you can do to help:

- wash, squash and sort your recycling – this helps the crews empty your containers quicker
- don't leave tissues in your recycling boxes
- wash your hands before & after putting containers out or bringing them back in
- park considerably – more people than usual are working from home which means more cars are parked in residential areas. If our vehicles can't get into your street, we can't collect your recycling and waste
- there's more recycling than usual being put out for collection, especially cardboard – please fold it so it fits into your recycling box and consider holding some back for your next collection

Recycling Centres are open to a reduced extent. Limitations of one visit per month have been lifted. Check North Somerset website for specific times as they are limiting access on different days by car registration numbers. With an odd last number in your vehicle registration you can visit on Monday, Thursday or Saturday, with an even number you can visit on Wednesday, Friday or Sunday. When visiting Portishead Black Rock recycling centre there is a one way system in place and it is not possible to make a right turn to enter or exit the site. To enter you must turn left coming down Valley road and to exit turn left towards Clevedon Road B3123.

Recycling Tips

Food waste

The average family throws away about £700 worth of food waste a year and most of it ends up in landfill. Please put your food waste into your food waste bin rather than into your black wheelie bin.

Plastic Bags

These can be recycled at a number of larger supermarkets including a lot of food packaging and magazine wrappers which are not biodegradable.

Crimestoppers: 0800 555 111 **POLICE** Local Police (Nailsea): 101

Our Local Beat Officer is PC Justina Lewis, a local resident. With her are Connor Aitken (PCSO 9382) and Kate Turner (PCSO 7948). Contact them on local non-urgent matters on 101 (give their collar number).

If anyone wishes to volunteer for Community Speed-Watch they can contact PC Lewis at Justina.Lewis@avonandsomerset.police.uk

They cover **Abbots Leigh, Leigh Woods, Dundry and Long Ashton.**

Contents

SERVICES for October

If rules change, church events will be on ZOOM

	CHURCH	SERVICE	READERS	READINGS
04-Oct	Trinity 17	Pets AND Harvest!*		
9.30am	Abbots Leigh	PETS* Family Worship	TBA	Luke 14: 1-6
10.45am	Abbots Leigh	Parish Communion For HARVEST*	Helen Cornish John Dempsey	2 Cor. 9:6-end Luke 12: 16-30
11-Oct	Trinity 18			
9.00am	Leigh Woods	BCP Holy Communion	Ginny Owen Celebrant	Philippians 4: 1-9 Matthew 22: 1-14
10.30am	ZOOM	Family Worship	Talbot family	Matthew 22: 1-14
18-Oct	Trinity 19	Welcoming the Wyards**		
10.30am	Abbots Leigh	Parish Communion	Laura Parham Christina Lopez	1 Thessalonians 1: 1-10 Matthew 22: 15-22
4.30pm	ZOOM	Evensong		1 Thessalonians 1: 1-10 Matthew 22: 15-22
25-Oct	Last Sunday after Trinity			
10.30am	Leigh Woods	Parish Communion	Michael Bothamley Simon Holmes	1 Thessalonians 2: 1-8 Matthew 22: 34-end
4.30pm	ZOOM	Evensong		1 Thessalonians 2: 1-8 Matthew 22: 34-end
01-Nov	All Saints/All Souls			
10.30am	ZOOM	All Saints – Parish Communion		
4.30pm	Abbots Leigh	All Souls***	Pastoral Team	

PEW NEWS comes out weekly. Contact BEFORE Thursday:
0117 974 1494 / alanshellard@gmail.com

A Tale of Wo.

My tale today is a tale of Wo.
But strange as it may be
This woeful tale is a tale of Wo.
A Wo. without an E.

A special Wo. whom we all know
And all of us agree
Has been a tower of strength, throughout
Her faithful ministry.

Interregnums came and went
And Wo. was always there
Evensongs and Morning Prayers
She did more than her share.

Christingles she has organised
Lent courses she has led
At many intercessions prayed
And many Gospels read.

And many sermons she has preached
Which really taxed the brain
And Last Hour on Good Friday will
Not be the same again.

So thank you Wo. for everything
Lay Reader and good friend
Your loyalty was like a rock
On which we could depend.

Your input to our worship
We'll all miss very much
So please don't be a stranger here
And always stay in touch.

Alan Shellard

CHRISTIAN MEDITATION is suspended, but could continue online. Please contact Hester if you are interested.

PASTORAL CARE If you know of anyone in Hospital or Nursing Home who would like a card or a visit, there are books at the end of both our Churches for you to fill in their details.

***4 Oct. PETS:** Please bring a pet (or a picture...); **HARVEST:** Please bring a bumper donation for the Foodbank. In need of inspiration? Toiletries and baby milk often needed in addition to other foodstuffs - see Alan's list on [p6](#).

****18 Oct.** we Hope to welcome, in person or via Zoom, the Wyards, our DRC (Congo) mission partners.

*****1 Nov. ALL SOULS' SERVICE: REMEMBERING LOVED ONES**

If a service in church is not possible or appropriate, we shall revert to Zoom. Please let me know by email or in person of any names you would like us to remember, if you can't attend personally, as it may not be possible or easy to complete a sheet of names as usual. We shall expect to remember in any case those whose Funeral or Burial service has taken place in the parish in the last three years. Hester

In need of Prayer? Anyone who would like prayer or a chat please contact Hester: 01275 219838 / hester.jones2@gmail.com or **Liz England:** 01275 373996 / Admin@theParishChurch.com

Worship on ZOOM contact Wo Hill to get a link to these services.
0117 985 2583 - woscarthill@gmail.com

Wanted!! A Parish Zoom Host: *Wo will be retiring from hosting Parish Zoom services at the end of the year. Please contact Hester if you would be interested to volunteer as a co-administrator of the Parish Zoom for 2021. Guidance on setting up is available.*

SHOEBOXES 2020

We hope to do a smaller Shoebox operation this year: please either leave wrapped and filled shoeboxes at my gate or in the HT porch (letting me know by email preferably), or donate a sum of money so we can fill for you (please leave sum for me or contact re electronic giving), or bulk buy a certain item and leave for me in porch or by gate, or help by wrapping boxes (again please leave for me). Thank you for whatever you feel able to do - I will do the best I can too! Hester

WELCOME PACK

New to the parish? Know of new arrivals? For a Welcome Pack, contact:

Abbots Leigh: Nicola Stinchcombe 01275 374523 or

Nicky Walker 01275 374177 - or **see Parish Website:**

www.theparishchurch.com

adrian's one pot cooking - two EASY suppers for the effort of one

First day- CHICKPEA RAGOUT

ingredients : onion - coarsely chopped, garlic - finely chopped, One Tin of chickpeas, some FROZEN peas and CHOPPED spinach, BOTTLE of tomato sauce (save half for tomorrow) seasoned with Indian spices. Method: Fry the onion in a little oil for a few minutes. Add the garlic for a few minutes more. add all remaining ingredients and continue cooking for 1/2 hour. Serve half in rustic pot. GOOD to eat just with Indian breads, OR grilled meat - chicken tikka, lamb kebabs.



Second day - AUBERGINE BAKE

Layer remainder of ragout in a baking dish. ADD sliced aubergine - well griddled to the point of charred, more tomato sauce, a thick layer of Ricotta Cheese,



finish with grated parmesan and Bake until surface is well done. GARNISH with mint or coriander. Looks great on the plate with green salad.

THE MOBILE LIBRARY - New routine

visits **4-weekly** on **FRIDAY** afternoons

October 2 and 30. Other dates not yet published.

Leigh Woods Vicarage Road, 1.30-1.50pm - Abbots Leigh Church Road, 2-3pm

The mobile library is operating a '**Click & Collect**' only service. Under current rules, customers cannot board the mobile library but can collect pre-ordered books, at an agreed time, from their stop. For more info.: 01275 888 864 / mobile.library@n-somerset.gov.uk. Please **do not visit the mobile library unless you have books to collect**. Stops & timings may be subject to change. Bad weather or breakdowns may cause the service to be delayed or withdrawn. If you think your service may be affected call 01934 426 834 Email: libraries@n-somerset.gov.uk



Sarah Friend, your Village Agent !

Hello, it's Sarah Friend your Village Agent. As we are all in Lockdown and unable to meet, I am still here remotely for you. If you need help with anything or a friendly chat on the phone, please get in touch. My phone numbers are 01275 878180 or 07710 580751 or email sarah.friend@curo-group.co.uk. Stay safe and well and look forward to seeing you all in person sometime soon.

**** **ADVERTISE YOUR PRODUCTS OR SERVICES** ****

Contact **ROBERT NARRACOTT** - 01275 375619 - robert.narracott@gmail.com

TREE FELLAS: TREE & GARDEN SERVICES. City & Guilds qualified, fully insured: all aspects of tree works - crown thinning, raising or lifting; formative tree pruning, precision tree felling. Gardening - all aspects: hedge/shrub pruning, lawn care, fencing, raised beds. Local refs. available. Emergency call out. Tel. 07557 365661

INDEPENDENT ROOFING SURVEYOR & PROJECT MANAGER Kevin Allen M.I.o.R. Specialist in the repair and refurbishment of slate, tile, flat and lead roof coverings.

Kevin Allen 07760 882329 / kevinallenps@yahoo.co.uk

AESTHETICS.YOU. - Professional, doctor-led aesthetic treatments (including anti-wrinkle injections & fillers) by Dr Yasmin Lynes from her home clinic in Abbots Leigh. For further info please visit www.aestheticsyou.com, email aestheticsyou@outlook.com, or tel. 07875 504 843

NEW PILATES STUDIO at The Old Brewery in Pill. Mat Classes, Reformer classes and one to ones available. For more information visit:

www.emmagreenpilates.com or call Emma on 07943 830 184

ARCHITECTURAL DESIGN & PLANNING CONSULTANTS Cadplan Architecture, your local experts. All types of projects, new houses, extensions, Listed buildings, building plans. Royal Oak House, 45-47 High Street, Nailsea. 01275 859110, 078900 58406 office@cad-plan.co.uk

HAIR AT HOME by Liz – professional mobile hair dresser. Specialises in colour, foils, cutting and perms. Mobile – 07792 971460 Tel – 01275 858152



PIANO TUITION John Talbot, experienced professional teacher, organist & choirmaster of the United Parish, currently has vacancies for pupils of all ages and levels at his Westbury Park practice. Tel. 0117 942 8344

OIL HEATING SOLUTIONS - Prompt, reliable service - routine maintenance to emergency repairs on Aga, Rayburn, Main, Trianco, Potterton, Worcester, Danesmoor, Heritage and Efel. Oftec registered. Also boiler, tank & gauge replacement, upgrades, removal.

Text a message to Neil on 07850 220588 or email: ohsthornbury@gmail.com



We have arrived!

Helping Hands has been established for over 30 years, and is now providing a fully tailored home care service in Portishead and the surrounding areas to support you to live independently at home.

We can help with:

- Companionship
- Overnight care
- Medication support
- Post-hospital care

For more information
Call the Portishead team today
07814 167 317

For more information
Visit our website
www.helpinghands.co.uk

LISTEN. THINK. CREATE.

Our simple ethos goes a long way.
We help businesses cut through
the noise and achieve results.

CORPORATE BRANDING
WEBSITE CREATION
ADVERTISING CAMPAIGNS
CONTENT MARKETING
DIGITAL AND SOCIAL MEDIA MARKETING
PROPERTY MARKETING
DESIGN FOR PRINT AND DIGITAL

To find out how we can help your business
speak louder, contact Peter Gibbons on
0117 956 6777 or email peter@spraguegibbons.co.uk
www.spraguegibbons.co.uk



SPRAGUE GIBBONS
Advertising | Marketing | Design

Chimney Sweep

Bristle Chimney Sweeping

Professional chimney sweeping service

Fully trained and registered member of
The Guild of Master Chimney Sweeps

Contact Hugh
0117 9868936 or 07824508758

www.bristlesweep.co.uk



JTR PAINTING & DECORATING

- ALL ASPECTS OF
PAINTING &
DECORATING
- INTERIOR & EXTERIOR
- PROFESSIONAL
DECORATING SERVICE
- FREE QUOTATION

**CONTACT
JOSH
ON**

07791386516



Chiropractic

THE MCTIMONEY WAY

How can it help You?

BACK PAIN ? NECK PAIN ?
OTHER JOINT PAINS ?

Many other conditions respond favourably
to chiropractic such as:

Arthritis	Sciatica
Menstrual Pain	Whiplash injuries
Headaches/Migraine	Hormonal Imbalances
Shoulder problems	Structural injuries
Colic in Babies	& many others

For further information or to arrange a FREE
spinal check &/or consultation, please contact

EMMA BREWER DC MMCA

McTimoney Chiropractor

07967 142030

Abbots Leigh Manor

Private Nursing Care



Why compromise when choosing a
nursing home? We have large
en-suite rooms with beautiful views,
experienced, courteous staff and an
extensive range of nursing facilities.

Call in and let us show you
around. You will be very welcome.

Tel: (01275) 374669

Manor Road, Abbots Leigh, Bristol, BS8 3RP

*Job opportunities: Care assistants & nurses
Could you join a team committed to
delivering high quality care? If so, call
Kathy to discuss our present vacancies.*

S.E.C. BUILDERS

Home Improvement

Extensions : Renovations : Conversions

All General Building Maintenance and Repairs

Free Estimates and Advice

Mobile: 07977 697 354

Home/Fax: 01275 871370



Elliott Bunker Ltd



**Bristol Based Accountants.
Built upon reputation**

Offering a full range of accountancy services
for our diverse client base

- Audit & accountancy
- Personal tax
- SME outsourcing services
- Tax planning
- Management accounts
- Corporation tax

Elliott Bunker Limited

Chartered Accountants, Eden Office Park, 1st Floor, 61 Macrae Road,
Ham Green, Bristol BS20 0DD.

Tel (0117) 929 9931 Fax (0117) 929 2312 admin@elliottbunker.co.uk



Bristol Builders

NETWORK

THE Authority on Quality

Everything from Kitchens and Bathrooms
to Extensions and New Builds

TEL: 0800 08 300 80 WEB: www.bristolbuilders.net

STAARS7: Possibly the most money saving boiler system for oil and gas heating

...and it's built-to-last!

Typically, when you change your boiler you'd be expected to save up to 30% on your heating bill.




With STAARS7 it's now up to a massive 60%
...and with the 10year warranty it's WIN WIN.
How do we do this?

The STAARS7 boiler system defeats well known money wasting heating problems. In fact, STAARS7 takes on at least 7 of these inefficiencies which is why we call it STAARS7

Money saving • Built-to-last

STAARS7 from the bright people at Standen's

CALL TODAY AND SAVE : 01934 832250

Standen's Plumbing Co. Ltd.   

Microsoft CERTIFIED Professional

Computer Problem? We Can Fix It!

Experienced • Qualified • Insured • Local



- ✓ We come to you!
- ✓ Home & business
- ✓ Friendly, local company
- ✓ Times to suit you
- ✓ NO CALL-OUT FEE!



Call your local 7-day helpline

0117 369 6900

or visit www.pcpal.co.uk

ABBOTS LEIGH VILLAGE HALL

An impressive and intimate building in the heart of our community and considered to be the best Village Hall in North Somerset.

The hall is available for a variety of activities including private functions and has a flexible space in the main Hall with a new and removable stage giving an increased floor area when not required.

A large kitchen will full catering facilities for up to 100 people and licenced for the sale of alcohol.

Stage Lighting, Sound System with CD player and auxiliary port connection, wifi and Loop System for the hard of hearing. A fixed digital HR projector with an HDMI connection, wired into the sound system, with an electrically operated screen.

A separate meeting room is also available seating up to 12 people

For printed specification and booking form please see the Abbots Leigh website or contact our resident caretakers John and Jan who will also be pleased to show you around. Tel: 01275 374597




Clifton High School
to educational nursery pre-school to sixth form

Developing Positive Thinkers

Nursery Pre-School - Year 6 Open Morning:
Wednesday 26th February 2020


**Experience Days and Tours
Available Year Round**

admissions@cliftonhigh.co.uk
0117 933 9087



Incastone
Landscaping & Stonework

Please visit the website to view further examples of our work:
www.incastone.co.uk
0117 908 3457 info@incastone.co.uk



Incastone build patios, driveways, steps, seating, oak timber planters, fencing and gates, water features and lots more.

We are specialist stone wall builders and employ traditional building techniques using lime or cement based mortars and reclaimed walling stone.

Incastone is a Bristol based landscaping, building and stone work company operating throughout the south west of England. We follow a strict recycle and reclaim policy.

LOGS FOR SALE

£70 per dumpy bag (the big ones builders get sand in)

LOG BURNER FRIENDLY SIZE

Telephone Chris Allcock
07770 754 622 (mobile) or
01275 373562 (please use
the mobile for preference)



Clifton Swim School

Established 1972

Learn to swim with Olympic swimmer & international coach
Swim England qualifications & qualified PE teachers
with decades of swim-teaching experience

Courses for children 4yrs & over

Classes for non-swimmers, Improvers in stroke technique & water skills. Lessons in diving, synchro, water polo & snorkelling
Awards for distance, speed, Bronze, Silver, Gold & Honours
Individual tuition available

Friendly & sympathetic instruction from professional staff,
experts in small group teaching in warm & pleasant surroundings
Clifton High School swimming pool, Clifton BS8 3HL

2020 Swim Schools

Mon 6 April - Fri 17 April - 10 sessions, weekdays

Mon 25 May - Fri 29 May - 5 sessions

Mon 27 July - Fri 7 August - 10 sessions, weekdays

Enquiries and bookings

cliftonswimschool@gmail.com

07507360120

www.cliftonswimschool.com

Would you like your Oven, Range or AGA Gleamed?

Unedited testimonial by one of our clients:

"Just wanted to express our thanks for re-renewing our Oven last week. You worked efficiently, quickly and without mess, and left our oven gleaming like new, so much so that we now feel that we should go out & buy a second-hand one for cooking & leave this one "Just for Show" Mr & Mrs Mawditt

- ✓ Full Strip Down Clean
- ✓ All Makes & Models
- ✓ Inclusive Pricing
- ✓ Safe For Children/Pets
- ✓ Fully Qualified & Insured
- ✓ Safe For Asthmatics
- ✓ Easy Call, Quote & Book
- ✓ Looks After Your Cooker
- ✓ All Work Backed By Our Satisfaction Guarantee

Call Now: **01275 370571**

www.ovengleamers.com

Ovens | Ranges | AGAs | Hobs | Extractors | BBQs

YOGA CLASS

Gentle Therapeutic Hatha yoga classes at Abbots
Leigh Village Hall.

Suitable for all levels.

Thursday 7-8pm (during term times).

Contact Jane McIntyre on her mobile:
07908876709

Or on Facebook: Jane Mc Yoga

Or drop in for a free trial anytime.





SF Tebby & Son

The Family Garage, Since 1971

At SF Tebby we pride ourselves on providing a good old fashioned courteous service...

- Savings off main dealer prices
- Honest, up-to-date and accurate advice
- Highly experienced and skilled technicians
- All makes and models of vehicle worked on
- Sales, Repairs, MOT testing
- No additional work will be carried out without your agreement
- Latest technology and equipment
- Local collection and delivery service



www.sftebbyandson.co.uk Tel: 0117 973 0055 info@sftebbyandson.co.uk

SF Tebby & Son, 2-5 Highland Square, Blackboy Hill, Clifton, Bristol BS8 2YB

Caple Banks Ltd. are proud to be your local Independent Financial Advisers.

We offer a **FREE** initial review and provide professional advice in any of the following areas;

- Pension & Retirement Planning
- Investment Portfolio Management
- Inheritance Tax Planning
- Protection - Personal & Corporate
- Estate Planning

Authorised and Regulated by the Financial Conduct Authority.

We are also looking forward to running a number of free Masterclasses over the coming months. Our next event is focused on Inheritance tax planning and Investments. If you would like more information or to book a free Initial review please email enquiries@caplebanks.co.uk or call 01275 370300.

www.caplebanks.co.uk



CAPLE BANKS
WEALTH MANAGEMENT

Jenny Pierce

Your local
wills & probate
specialist in
Central Bristol



Outline your wishes
and safeguard your
loved ones for the
future

Update your Will if
your circumstances
change

Need help with
probate or probate
disputes?

Home visits by
arrangement

WARDS
SOLICITORS

Jenny Pierce
Central Bristol

0117 929 2811

www.wards.uk.com

Barnes
Stringer
Osteopathy



**Appointment available at
Penny Bohn Centre in Ham
Green and the Southville Clinic**

Call 07584 570348

www.barnesstringer.co.uk

info@barnesstringer.co.uk

① @barnesstringerosteopath



**Let us help you make the
most of your garden
this year!**

We will:

- Design a new look for the garden
- Build a patio or outdoor kitchen
- Replace old or damaged fencing
- Upgrade your lawn with new turf
- Carry out a full garden tidy
- Maintain your garden with a regular visit

Ring Jack or Jonathan on 0117 205 0602

Or have a look at our web-site

www.pro-tidy.co.uk

Adroit Print
& design

Unit 3 Aven House
Blackfriars Road, Nalsea, Bristol, BS48 4DJ
Sales: 01275 810 588
sales@adroitprint.org.uk
www.adroitprint.org.uk

**NOW AVAILABLE
LARGE FORMAT PRINTING
A0, A1, A2, BANNERS, STICKERS
AND CANVAS PRINTING**

Adroit Print in Nalsea offers the complete range
of printing from Digital printing right through to
full colour lithographic printing.

Books - Perfect / Wire / Stapled bound books

Manuals - Safety / Instruction

Business Cards / Letterheads / Newsletters

Leaflets / Flyers

Monthly Magazines

Picture Books

Anything you need printed
we can print it !!



Leigh Court Estate
Pill Road
Abbots Leigh
Bristol
BS8 3RA
Tel: 01275 375292



Open 7 days a week

A PLANT FOR ALL SEASONS – AND MORE

- Plant and gardening advice from experienced staff
- Most plants grown on site
- Colour plus quality and value for money
- Occasional behind-the-scenes tours
- Keep up to date via our website or subscribe to our newsletter

Email: bracken.wood@btconnect.com

Web: www.Brackenwood-plantandgardencentre.com

The Garden Tea Room - open daily



LAWYERS FOR YOUR BUSINESS AND FAMILY

WHAT CAN WE OFFER YOU?

We provide a wide range of specialist legal services. Our staff can offer advice/help concerning Residential Property Transaction, Wills, Powers of Attorney, Probate and Estate Planning, Divorce and Family matters, Commercial and Business affairs and Employment Matters.

Either pop in to our office at 15 The Mall Clifton to make an appointment for a free half hour consultation or phone us on 0117 9744100. Also offices on Whiteladies Road, Henleaze and Shirehampton.

Visit us at www.amdsolicitors.com