

## ADULT QUESTIONNAIRE - First draft of analysis

Total number of respondents = 255

### Section 1 - Community and Communications

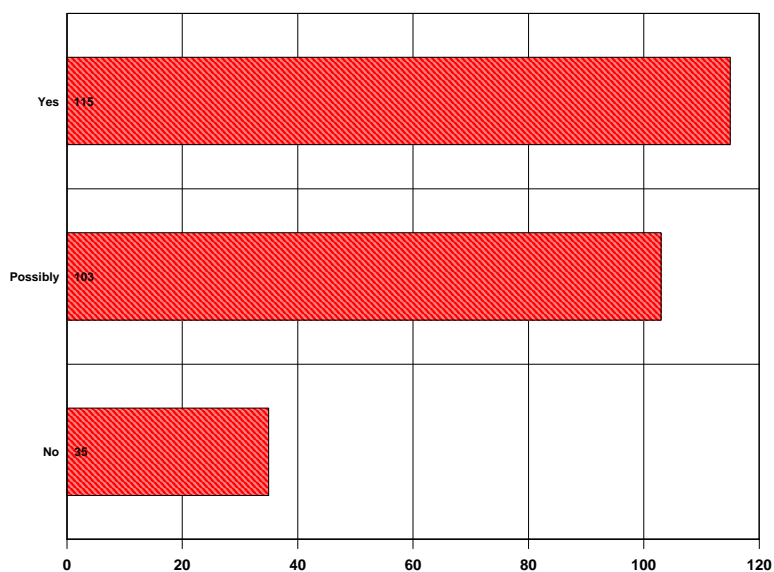
1). How frequently do you use the following services within the Parish?

	<i>More than once a week</i>	<i>Weekly</i>	<i>Monthly</i>	<i>Less frequently</i>	<i>Never</i>
<i>Village Hall (for any reason)</i>	0	13	52	153	30
<i>Mobile library</i>	0	8	9	20	200
<i>Milk delivery</i>	83	4	0	1	156
<i>Newspaper delivery</i>	83	9	0	2	149
<i>Home delivery - supermarket</i>	1	4	6	21	197
<i>The George Pub</i>	6	26	69	127	19
<i>Organic vegetables from Leigh Court</i>	0	11	0	24	197
<i>Brackenwood Plant Centre</i>	2	9	87	130	23
<i>Leigh Court Business Centre</i>	1	1	0	24	212
<i>Clifton College Sports Complex</i>	2	5	4	28	200

2). Would you actively support a regular farmers market in the village hall?

*Yes*..... 115 *Possibly*..... 103 *No* ..... 35

Q2 Would you actively support a regular farmers market in the village hall?



3). Would you actively support a mobile shop on say a regular basis outside the village hall?

*Yes*..... 35 *Possibly*..... 120 *No* ..... 95

## Section 1 - Community and Communications

- 4). In your view, is there any other service that should be provided?
- |   |    |  |   |
|---|----|--|---|
| <i>One Stop Shop or Local Shop</i> .....                          | 20 | <i>Hospital Transport</i> .....  | 1 |
| <i>Post Office</i> .....  | 16 | <i>Extend the Village Hall licence to allow functions beyond 12 midnight</i> .....                 | 1 |
| <i>Mobile Post Office</i> .....                                   | 6  | <i>Deliver North Somerset Newspaper - Clevedon Mercury</i> .....                                   | 1 |
| <i>Newspapers</i> .....   | 5  | <i>Bin for Dog Mess in the Old School Field</i> .....  | 2 |
| <i>Use the Pub as a centre for a Post Office, Shop etc.</i> ..... | 3  | <i>Early morning newspaper delivery service</i> .....  | 1 |
| <i>Newsagent</i> .....  | 3  | <i>A sensibly priced newspaper delivery service</i> .....  | 2 |
| <i>Milk</i> .....   | 2  | <i>A shredder on the village green - to avoid the use of bonfires</i> .....                        | 1 |
| <i>Bank (including a mobile bank)</i> .....                       | 3  | <i>Mains Gas Supply</i> .....  | 1 |
| <i>Partnership of Post Office, Pub and Shop</i> .....             | 1  | <i>Mains Drainage</i> .....  | 2 |
| <i>ATM machine (at the pub?)</i> .....                            | 1  | <i>Newspapers delivered to a central collection point (church porch)</i> .....                     | 1 |
| <i>Extend Mobile Library</i> .....                                | 1  | <i>Morning coffee in Internet Cafe in the pub or village hall</i> .....                            | 2 |
| <i>Allotment</i> .....  | 1  | <i>Mobile Fishmonger</i> .....   | 1 |
| <i>Cafe</i> .....   | 2  | <i>Recycling collection service</i> .....  | 1 |
| <i>Similar to Pill Resource Centre</i> .....                      | 1  | <i>Bus shelter at the Leigh Court bus stops</i> .....  | 1 |
| <i>Primary School</i> .....                                       | 3  | <i>Organic vegetables weekly</i> .....   | 1 |
| <i>Taxi / Mini Cab Service</i> .....                              | 1  | <i>Proper refuse collection - more frequently</i> .....  | 1 |
| <i>Take Aways</i> .....   | 1  | <i>Regular maintenance of A369 paths, on both sides (grass cutting, leaf clearing, etc.)</i> ..... | 1 |
| <i>Additional Information in the Link</i> .....                   | 1  |  |   |
- 5). Many improvements have already been made to the Village Hall including new kitchen equipment and stage lighting. What other facilities (not activities) would you like to see provided or improved in the Village Hall?
- |  |    |   |   |
|--|----|---|---|
| <i>Better Heating - not overhead heating</i> .....   | 20 | <i>Too much money already spent on the hall</i> .....                                 | 1 |
| <i>No further improvements needed</i> .....  | 15 | <i>Mirror in disabled toilet</i> .....  | 1 |
| <i>Already an excellent facility</i> .....   | 10 | <i>Better disabled access</i> .....   | 1 |
| <i>Improve the parking facilities</i> .....  | 9  | <i>Availability of a village marquee to enlarge the hall for special events</i> ..... | 1 |
| <i>Better Sound System</i> .....   | 8  | <i>Mobile bar counter</i> .....   | 1 |
| <i>Better Front Door - draughtproof and easier to open</i> ...                             | 7  | <i>Regular cleaning of drapes, lights, paintwork, etc.</i> .....                      | 1 |
| <i>A good, large screen for cinema, slides, digital projection, TV sports events</i> ..... | 6  | <i>Provide a proper bar</i> .....   | 1 |
| <i>Enlarge the hall - it is currently too small for weddings, parties, etc.</i> .....      | 4  | <i>Regular / approved caterers</i> .....  | 1 |
| <i>Comfortable chairs / better seating</i> .....   | 4  | <i>More cupboard storage</i> .....  | 1 |
| <i>New fridge / freezer</i> .....  | 3  | <i>Replace curtains with easier and brighter blinds</i> .....                         | 1 |
| <i>A lectern (with lighting) for speakers</i> .....  | 1  | <i>Well equipped already</i> .....  | 1 |
| <i>Restrict bar facility to functions only</i> .....                                       | 1  | <i>Install a Loop System for the deaf</i> .....                                       | 3 |
| <i>Put a curtain on the stage</i> .....  | 2  | <i>Install radio headphones</i> .....   | 1 |
| <i>Baby changing facilities</i> .....  | 1  | <i>A piano</i> .....  | 1 |
| <i>Improve the toilets</i> .....   | 2  | <i>Do more for young people such as table tennis and snooker</i> .....                | 1 |
| <i>New cutlery, cruet sets, utensils, etc.</i> .....                                       | 2  | <i>Where is the snooker table for use?</i> .....                                      | 1 |
| <i>Install a shower for keep fit classes</i> .....   | 1  | <i>Consult with Peter Ellis and Hazel on improvements</i> ...                         | 1 |
| <i>Improve acoustic insulation</i> .....   | 1  |   |   |

## Section 1 - Community and Communications

6).	Plans are being prepared for improvements to the Old School Field. What are your views on the proposed improvements?		
	<i>Good / support the improvements</i> .....	44	<i>Improve info on the web site</i> ..... 4
	<i>Excellent / very supportive</i> .....	25	<i>Include a basket ball hoop</i> ..... 1
	<i>Keep the improvements sympathetic with its rural setting</i> .....	12	<i>Include netball</i> ..... 1
	<i>Keep it simple, small and uncomplicated</i> .....	11	<i>Prefer scheme A2</i> ..... 2
	<i>No changes or improvements required</i> .....	10	
	<i>Plans do cater for all age groups</i> .....	6	<i>Support for the boules and the sports equipment</i> ..... 1
	<i>We need open space for games like football and peaceful views</i> .....	5	<i>Include a roundabout</i> ..... 1
	<i>Consider the privacy of the neighbours of the field</i> .....	5	<i>We do not want teenagers outside of the village to be attracted into village</i> ..... 1
	<i>There are not enough children in the village to use the field / to justify the cost of improvements to the field</i> ....	5	<i>Include a skate boarding facility within the field</i> ..... 1
	<i>We do not want 'outside' people to visit the playing field</i> .....	4	<i>Scheme is too ambitious</i> ..... 1
	<i>Concerned that new equipment will attract noisy people or vandals</i> .....	4	<i>Do not support additional equipment for children</i> ..... 1
	<i>Have not seen plans / don't know about this</i> .....	4	<i>Support for extra seating</i> ..... 1
	<i>Include a tennis court</i> .....	4	<i>Include a pond</i> ..... 1
	<i>Plans are well thought out</i> .....	3	<i>No proposed maintenance or insurance costs have been presented to the parish council</i> ..... 1
	<i>Too complex / too much of it</i> .....	3	<i>Need to improve access to the field by improving paths to Church Road, otherwise, for example, Dennyview residents have to drive to the field</i> ..... 1
	<i>Include improved landscaping</i> .....	2	<i>We don't want more visitors with cars, it will create a parking problem</i> ..... 2
	<i>Scheme not sufficiently rustic</i> .....	2	<i>Upgrade the children's play equipment</i> ..... 1
	<i>A suggestion for an additional piece of play equipment</i> .....	2	<i>Provide a barbecue facility</i> ..... 1
	<i>Plans are sympathetic to the surroundings</i> .....	2	<i>Include more play equipment for the older children</i> .... 1
	<i>Include a fence to keep dogs out</i> .....	1	<i>There should be more play equipment for the children</i> 2
			<i>Ensure plans cater for all age groups and not just children</i> ..... 2
	<i>Include activities for the older community</i> .....	1	<i>Don't include a skate boarding facility within the field</i> 1
	<i>Include more seating for the elderly</i> .....	2	<i>Too expensive</i> ..... 1

## Section 1 - Community and Communications

7). Work has already started on improving the environment at Abbots Pool. What are your views on the proposed improvements?

<i>Good / supportive of plans / excellent</i> .....	80	<i>I don't feel safe around AP</i> .....	1
<i>Keep Abbots Pool as natural as possible</i> .....	13	<i>More people need to get involved in the voluntary maintenance work</i> .....	1
<i>More information on the website / better access to information</i> .....	12	<i>Don't make any changes / improvements, as I like it as it is</i> .....	1
<i>AP needs regular attention</i> .....	10	<i>Get rid of / close down the car park</i> .....	1
<i>Stop cars going down to the pool from the car park by having a secure gate at the car park end</i> .....	7	<i>More tree planting is needed for the longer term</i> .....	1
<i>Concern about vandalism</i> .....	6	<i>Open it up to encourage a greater variety of flora</i> .....	2
<i>Retain some Rhododendrons near pool - don't cut them all down</i> .....	5	<i>Keep on improving the area</i> .....	2
<i>Have not seen plans / don't know about this</i> .....	5	<i>Regulate fishing</i> .....	2
<i>Maintenance work must be backed by North Somerset Council</i> .....	4	<i>Improve the track surface between the car park and the pool - it's too muddy</i> .....	2
<i>The seating improvements are good</i> .....	4	<i>Encourage snowdrops, bluebells, etc. on the slope above the track between the car park and the pool</i> .....	1
<i>An offer to help keep the work going</i> .....	3	<i>Improve signposts to the pool on surrounding roads</i> ...	1
<i>Encourage greater use of the pool by more people</i> .....	3	<i>No huts or signs for fishermen by the pool</i> .....	1
<i>Will it bring in more traffic or parking problems?</i> .....	3	<i>Consider a village rota to organise a litter pick-up each week</i> .....	1
<i>A better police presence or regular surveillance is needed</i> .....	3	<i>Sunday morning work parties are difficult to attend for church goers</i> .....	1
<i>The plan is well researched and appropriate</i> .....	3	<i>Improve car park so that it is more organised</i> .....	1
<i>More dustbins are needed</i> .....	3	<i>Stock the pool with fish</i> .....	1
<i>A camera / CCTV should be considered</i> .....	3	<i>AP should be actively worked on and budgeted for by the Parish Council</i> .....	1
<i>More frequent refuse collection and rubbish picked up</i> .....	3	<i>Too much reliance on voluntary help for maintenance, there should be permanent paid staff</i> .....	1
<i>Who is responsible for on-going maintenance?</i> .....	2	<i>It is still grotty and attracts the wrong sort of visitor</i> ...	1
<i>Restrict cars / cycles from using pathways</i> .....	2	<i>Consider night lighting for the car park</i> .....	1
<i>The fishing fraternity leave the pool untidy</i> .....	2	<i>Improve the path network and put more paths in</i> .....	2
<i>Waste of time as there is no permanent resource such as a warden</i> .....	1	<i>Fly tipping is a problem</i> .....	1
<i>Improve the car park so that it is visible from the pool</i> ..	1	<i>Can we swim in the pool?</i> .....	1
<i>The pool is very important to the village and the plan needs to be proactively worked on</i> .....	1	<i>AP needs to be managed properly at a higher level than local volunteers</i> .....	1
<i>A private fishing club would provide further improvements</i> .....	1		

- 8). As many of you will appreciate, Wendy and Richard have worked very hard to make The George a pleasure to visit. Nevertheless, the lease is currently up for sale and the future of the pub remains uncertain.

If it came to the point that either the village acquired it, as opposed to it being offered to a developer for change of use, would you be prepared to contribute to a financial rescue fund?

*Yes*.....43 *Possibly*..... 94 *No* .....

104

## Section 1 - Community and Communications

### 9). Which activities in the Parish do you participate in, and how often?

	Weekly	Monthly	Less frequently	Never	Interested but need more info.	No interest
<i>Amateur Dramatics</i>	0	1	18	95	19	94
<i>Bellringers</i>	2	1	1	107	6	103
<i>Bible Study Group</i>	1	0	6	105	7	103
<i>Biking</i>	22	8	26	82	11	75
<i>Bridge</i>	4	4	17	95	3	100
<i>Church</i>	39	15	59	50	3	68
<i>Church Choir</i>	8	1	4	104	3	93
<i>Civic Society Events</i>	1	17	107	50	14	41
<i>Coffee morning</i>	0	2	59	83	8	66
<i>Cricket</i>	1	0	19	101	11	88
<i>Dancing</i>	0	5	28	91	25	72
<i>Fishing at Abbots Pool</i>	0	2	8	109	7	95
<i>Gardening Club</i>	2	13	52	80	22	56
<i>Herb Group</i>	0	4	14	111	16	70
<i>Mothers and Toddlers</i>	1	0	7	109	3	98
<i>Riding</i>	8	3	4	104	11	91
<i>Painting / Art exhibitions</i>	1	6	99	56	24	46
<i>Skittles</i>	1	1	27	94	24	71
<i>Time Out</i>	1	7	14	109	5	81
<i>Walking</i>	76	18	45	41	18	33
<i>WI</i>	2	14	6	109	7	83
<i>Yoga / Keep Fit / Pilates</i>	14	0	19	90	29	61

### 9b) Other (please specify)...

<i>Botanical surveys</i> .....	0	<i>Tennis</i> .....	0	<i>Annual choral singing in the church</i> .....	1
<i>Neighbourhood Watch</i> .....	1	<i>Book Club</i> .....	0	<i>Visiting on behalf of the church and WI</i> .....	1

### 10). Are there any other activities, classes or events which you'd like to see organised in the future, either generally or for specific groups?

<i>Wildlife and nature talks and walks</i> .....	5	<i>Another talk by Pam McFeat</i> .....	1
<i>Craft classes and/or demonstrations or workshops</i> ...	5	<i>Children's activities</i> .....	1
<i>More village social events such as street parties, informal dances</i> .....	4	<i>Mens activities</i> .....	1
<i>Local history group or talks</i> .....	4	<i>More barn dances</i> .....	1
<i>Regular art groups and classes</i> .....	4	<i>Keep Fit in the evening</i> .....	1
<i>Tennis</i> .....	3	<i>Village cricket</i> .....	1
<i>Dance classes - Salsa, Modern, Tap, La Roque</i> .....	3	<i>Bristol University Botanical Garden Club</i> .....	1
<i>Bridge instruction and games</i> .....	3	<i>Sewing / quilting classes</i> .....	1
<i>More evening classes of all types</i> .....	3	<i>Brownies</i> .....	1
<i>Show films in the hall, create a village cinema</i> .....	3	<i>Boules</i> .....	1
<i>Annual village fete</i> .....	2	<i>Are there any evening classes or facilities at St Catherine's?</i>	1
<i>Judo, martial arts</i> .....	2	<i>Book Club</i> .....	1
<i>Day care facilities for the elderly</i> .....	1	<i>A summer ball or dance in Leigh Court for charity</i> .....	1
<i>More exercise classes</i> .....	2	<i>Meetings for the really elderly</i> .....	1
<i>Language classes</i> .....	2	<i>Chess Club</i> .....	1
<i>Computer groups / classes</i> .....	2	<i>Wine tasting</i> .....	1
<i>Teenager groups: Youth Group</i> .....	2	<i>General history classes (not local history)</i> .....	1
<i>Cookery classes</i> .....	2	<i>Meditation</i> .....	1
<i>Teenager groups: Keep Fit</i> .....	1	<i>Teenager and children's groups during the school holidays</i>	1
<i>Teenager groups: Dancing</i> .....	1	<i>Casual golf days</i> .....	1
		<i>Babysitting Circle</i> .....	1

## Section 1 - Community and Communications

- 11). Do you have access to the Internet?  
*Yes*..... 191      *No* ..... 61
- 12). If you ever visit the Parish website, [www.abbotsleigh.org.uk](http://www.abbotsleigh.org.uk), which aspects do you find useful...  
*Parish Council information*.....65    *Village Character Statement*      46    *Latest planning applications*..... 63  
*information*.....  
*Checking for rubbish collection*      66    *Community news* .....57    *Other*..... 8  
*dates after Bank holidays* .....
- 13). Can you suggest any improvements to the Parish website?  
*No improvements needed* ..... 12  
*Excellent site*.....7    *Have a picture of Abbots Pool, showing rockwork or*    1  
*Pulhawite*.....  
*Publish the timetable for the Village Hall and in the*    4    *Provide: Useful telephone numbers* ..... 1  
*Link* .....  
*I did not know there was a website* .....4    *Better links from Google and Yahoo* ..... 1  
*Concerns about the need for constant maintenance*    3    *Better search facility needed* ..... 1  
*and keeping the information up to date* .....  
*Provide details of up to date events and how to get the*    2    *Provide: Abbots Leigh Pool* ..... 1  
*tickets* .....  
*Provide a Neighbourhood Watch page* .....2    *It needs more input from the community*..... 1  
*Provide: Advertising*.....2    *Out of date information* ..... 1  
*Provide: Diary of events within the village*.....2    *Not easy to find information* ..... 1  
*Bin and recycling details*.....2    *Provide: A bulletin board*..... 1  
*Not interested*.....2    *Simplify it*..... 1  
*Advertise the usefulness of the website to the*      2    *Provide a Crime Update page, i.e, Beat Officer's page.* 1  
*community / encourage its use* .....  
*The whole website needs to be updated regularly* .....2    *Book the village hall online*..... 1  
*Provide: Bus Timetable* .....2    *More colour needed*..... 1  
*Provide: St. Catherine's School link*.....1    *Active monitoring of content to ensure it is kept up to* 1  
*date*.....  
*Provide: Link to the church*.....1  
*Provide: Telephone numbers for recommended*      1  
*plumbers/electricians, etc.* .....

## Section 2 – Planning and Development

- 14). Given that Central Government wishes to increase the housing stock, and that not all houses can be built in urban areas, North Somerset Council may find itself under pressure to provide more sites for housing. If we had to accept more development within the parish and we were able to influence the type of development, what would you feel about the following:

	<i>Strongly for</i>	<i>For</i>	<i>No strong views either way</i>	<i>Against</i>	<i>Strongly against</i>
<i>Smaller houses</i>	43	71	65	26	29
<i>Affordable / subsidised housing</i>	26	47	51	50	59
<i>Larger family houses</i>	13	44	71	55	43
<i>Small groups of houses</i>	14	65	67	42	42
<i>Flats</i>	8	14	30	75	100
<i>Sheltered housing</i>	24	58	55	33	62

- 15). In terms of the housing needs of you and your family, what types of developments would suit you in the future and in what timeframe would you be thinking?

	<i>Within 1-5 years</i>	<i>Within 6-10 years</i>	<i>More than 10 years</i>	<i>No interest to me</i>
<i>Smaller houses</i>	25	28	33	111
<i>Affordable / subsidised housing</i>	9	8	4	153
<i>Larger family houses</i>	9	10	5	157
<i>Small groups of houses</i>	8	10	16	137
<i>Flats</i>	12	10	7	152
<i>Sheltered housing</i>	11	14	47	125

## Section 2 – Planning and Development

- 16a). Do you have any concerns about "infill" development, ie increasing the density of housing by building a second dwelling on the plot or by extending an existing house.
- |  |    |  |   |
|--|----|--|---|
| <i>Alters the character of the village / sympathetically</i>                 | 62 | <i>Increased pressure on roads.....</i>                      | 7 |
| <i>OK.....</i>   |    |  |   |
| <i>No .....</i>  | 39 | <i>Road access / off-street car parking .....</i>            | 7 |
| <i>Open space is diminishing / overcrowding / views .....</i>                | 27 | <i>Consistency in interpretation and enforcement .....</i>   | 4 |
| <i>No further infill at all.....</i>   | 20 | <i>Concern about infill - knock down and rebuild .....</i>   | 3 |
| <i>Closeness to adjacent dwellings .....</i>                                 | 18 | <i>Loss of rural character .....</i>                         | 2 |
| <i>Only a concern it affects the neighbours / properly carried out .....</i> | 13 | <i>Against gold diggers - development and moving on.....</i> | 2 |
| <i>No, unless mains drains installed.....</i>                                | 9  |  |   |
- 16b). What controls/restrictions would you place on "infill" development?
- |  |     |
|--|-----|
| <i>Planning authorities need to extend control .....</i>             | 125 |
| <i>In keeping with VCS .....</i>                                     | 82  |
| <i>No infill at all! .....</i>                                       | 18  |
| <i>Suitable use within space / ratio of house size to plot .....</i> | 12  |
| <i>OK if appropriate .....</i>                                       | 11  |
| <i>No second dwelling on existing plots.....</i>                     | 4   |
| <i>Rear development should be restricted .....</i>                   | 3   |
| <i>Large houses should have large spaces.....</i>                    | 3   |
| <i>Only use brown field sites .....</i>                              | 2   |
| <i>Keep infills consistent .....</i>                                 | 1   |
- 17). At present, the "village fence" (*see map 1*) restricts any further development outside that boundary. Are there any circumstances in which you would be prepared to see the development boundary altered?
- |  |     |  |   |
|--|-----|--|---|
| <i>No, or if prevents further development.....</i>                     | 148 |  |   |
| <i>OK in interests of good planning, design and spaciousness .....</i> | 12  | <i>Only for activity centre for young people, community buildings, nursery or school .....</i> | 3 |
| <i>Yes - each case judged on its merits / infill.....</i>              | 11  | <i>Yes - if it helps preserve Manor Field and Harris Lane as an open space.....</i>            | 1 |
| <i>Sheltered housing / low cost housing.....</i>                       | 9   | <i>Only if sufficient safeguards are in place .....</i>  | 2 |
| <i>Yes - no circumstances stated .....</i>                             | 8   | <i>Yes - if NSDC dictated it .....</i>   | 1 |
| <i>Doesn't affect the environment .....</i>                            | 4   | <i>Extend 'fence' to include all of Pill Road .....</i>  | 1 |
|  |     | <i>Ok if a bypass was installed .....</i>  | 1 |
|  |     | <i>Reasonable access would be required.....</i>  | 1 |
- 18). A "conservation area" (*such as the village of Leigh Woods*) provides a degree of protection from inappropriate development whilst imposing many restrictions on current buildings and habitat. The result is a similar situation to those owners and occupiers of listed buildings who are subject to stricter planning regulations. Should the Parish Council investigate the possibilities of having areas of the Parish designated as a conservation area?
- |                 |     |                 |    |
|-----------------|-----|-----------------|----|
| <i>Yes.....</i> | 140 | <i>No .....</i> | 79 |
|-----------------|-----|-----------------|----|



- 19). There have been suggestions that the building behind the village hall that currently houses the skittle alley could be put to better use. Do you have any suggestions for other activities that could take place there?

No .....	55
Other – youth club, cinema, music (piano) parties, bar, disco, roller disco .....	20
Community coffee shop .....	7
Keep the skittle alley.....	13
Internet Cafe / computer classes / Bridge .....	5
Community shop / second-hand bookshop / farmers market .....	11
Reading room / library / activities for the elderly.....	4
Overflow for main Village Hall / private functions .....	11
Indoor Bowls .....	3
Children's club / nursery school .....	11
Folding the skittle alley back to give dual purpose .....	2
Table Tennis .....	2
Scouts .....	2
Second Village Hall.....	1
Guides.....	2
Papers and milk shop.....	4
Youth Hostel.....	1
Weekly Post Office .....	3
Art Gallery, antique bric-a-brac sale / auction / craft workshops .....	3
2 small flats .....	1
Gymnasium and sauna.....	1

### Section 3 - Services

- 20). Mains drainage is a possibility for the west end of the Parish as an extension from Pill. How important do you think the implementation of mains drainage is across the rest of the Parish.

Strongly in favour .....	54	A poor idea.....	43
A good idea .....	57	Strongly against .....	60
No view either way.....	32		

**For = 111 Against = 103**

- 21). Where do you go to see your...

	Pill	Portishead	Clifton	Elsewhere
Doctor	226	0	14	13
Dentist	13	32	92	105

- 22). When you need to see the Doctor/Dentist, is there anything that you find difficult?

Getting an appointment .....	7	Other .....	4
Transport to and from the surgery.....	5	No difficulties .....	224
Getting the prescription .....	3		

- 23). Are there any healthcare facilities that you feel strongly should be provided in the Parish?

Surgery once or twice a week .....	6	Viagra at Communion please!.....	1	Seats at bus stops.....	1
Dentist surgery .....	7	No - Pill surgery serves us well .....	3	Nursing rota / walk in clinic .....	2
Transport to existing healthcare facilities .....	4	Delivery of prescriptions for elderly .....	2	Chiropody .....	1
Private GPs to be available for choice .....	1	Physiotherapy .....	1		

- 24). North Somerset District Council have recently implemented a recycling collection service within the Parish. What are your views?

It's a good service and I use it.....	149	I use it reluctantly .....	4
The service could be more regular .....	38	I have no intention of using it .....	5
The service should be extended beyond paper, glass, cans and textiles .....	73		

## Section 3 - Services

- 24).a Any other comments
- |  |    |   |   |   |   |
|--|----|---|---|---|---|
| <i>Not currently covering this property .....</i>  | 36 | <i>Can we have wheelie bins? .....</i>                  | 2 | <i>Would like an extra box .....</i>                  | 1 |
| <i>Include plastics/plastic bags .....</i>         | 14 | <i>Same day as refuse collection .....</i>              | 2 | <i>Is it cost effective? .....</i>                    | 2 |
| <i>Did not know there was one .....</i>            | 12 | <i>Include cardboard .....</i>                          | 4 | <i>Dates in Link/actual do not match</i>              | 1 |
| <i>Need a green waste collection .....</i>         | 5  | <i>After Bank Holidays - not clear ....</i>             | 1 | <i>Alternate with main collection - same day.....</i> | 1 |
| <i>Excellent idea and should be extended .....</i> | 6  | <i>Use the facilities at Sainsburys/Portishead.....</i> | 2 | <i>Include batteries.....</i>                         | 1 |
| <i>Service is often late, unreliable ....</i>      | 6  | <i>Do not have a box.....</i>                           | 1 | <i>Boxes are too heavy when full.....</i>             | 1 |
| <i>One-stop bring bank.....</i>                    | 1  |   |   | <i>Boxes are too small .....</i>                      | 1 |
| <i>Would recycle anyway .....</i>                  | 2  |   |   | <i>Weekly collection.....</i>                         | 1 |
- 25). Do any of the following currently worry you in the Parish?
- |                              | <i>A lot</i> | <i>A little</i> | <i>Not really</i> |
|------------------------------|--------------|-----------------|-------------------|
| <i>Inconsiderate parking</i> | 42           | 84              | 88                |
| <i>Speeding traffic</i>      | 191          | 37              | 16                |
| <i>Assault</i>               | 4            | 22              | 172               |
| <i>Car crime</i>             | 32           | 95              | 83                |
| <i>Burglary/theft</i>        | 59           | 113             | 43                |
| <i>Drugs</i>                 | 5            | 35              | 159               |
| <i>Vandalism</i>             | 29           | 58              | 118               |
- 26). Do you know how to contact the Community Police Officer?
- |                 |     |                 |    |                                     |    |
|-----------------|-----|-----------------|----|-------------------------------------|----|
| <i>Yes.....</i> | 141 | <i>No .....</i> | 50 | <i>Didn't know we had one .....</i> | 54 |
|-----------------|-----|-----------------|----|-------------------------------------|----|
- 27). The whole parish is covered by a Neighbourhood Watch Scheme. Do you know who your contact person is?
- |                 |     |                 |    |
|-----------------|-----|-----------------|----|
| <i>Yes.....</i> | 189 | <i>No .....</i> | 65 |
|-----------------|-----|-----------------|----|
- 28). Are you aware of the Local Action Team Initiative here and in neighbouring parishes?
- |                 |    |                 |     |
|-----------------|----|-----------------|-----|
| <i>Yes.....</i> | 81 | <i>No .....</i> | 163 |
|-----------------|----|-----------------|-----|
- 29). How do you find out what's going on in the Parish? (*Tick all that apply*)
- |                           |     |                                   |     |                              |    |
|---------------------------|-----|-----------------------------------|-----|------------------------------|----|
| <i>Word of mouth.....</i> | 159 | <i>Notices/posters .....</i>      | 105 | <i>Evening Post.....</i>     | 23 |
| <i>The Link .....</i>     | 243 | <i>Abbots Leigh website .....</i> | 45  | <i>Clevedon Mercury.....</i> | 20 |
- 29).a Other please specify
- |                                    |   |  |   |  |   |
|------------------------------------|---|--|---|--|---|
| <i>Gossip .....</i>                | 1 | <i>What goes on in the parish? .....</i> | 1 | <i>Free Mercury - as in Pill and Portishead.....</i> | 1 |
| <i>Pill paper.....</i>             | 1 | <i>Pub .....</i>                         | 1 |  |   |
| <i>Leaflets through door .....</i> | 1 | <i>Link not delivered .....</i>          | 1 |  |   |
- 30). The Parish Council meets once a month usually on the third Monday. Do you know what takes place at these meetings?
- |                 |     |                 |     |
|-----------------|-----|-----------------|-----|
| <i>Yes.....</i> | 110 | <i>No .....</i> | 135 |
|-----------------|-----|-----------------|-----|

## Section 3 - Services

31). Do you have any suggestions for how the Parish Council can communicate better with the Parish?

<i>More info. in Link / Link is fine / regular flyers</i> .....	14	<i>Attend more village activities</i> .....	1
<i>They are making great strides / doing a good/better job</i> .....	23	<i>Publish minutes in Link</i> .....	4
<i>Monthly newsletter / regular bulletin</i> .....	9	<i>Better use of website</i> .....	2
<i>Ensure regular delivery of Link - often late</i> .....	1	<i>Keep directory of residents on email</i> .....	1
<i>Keep talking to people</i> .....	2	<i>Each Link to give nos. for PC and Civic Society officers</i> .....	1
<i>Community events engender more communication</i> .....	1	<i>Use 'Summer event' to raise awareness / enthusiasm for PC issues</i> .....	0
<i>Evening meetings - working during day</i> .....	2	<i>Clearer info., e.g. where meetings are to be held</i> .....	1
<i>TV broadcasts</i> .....	1	<i>Reminder notices in prominent positions</i> .....	1
<i>Emails</i> .....	3	<i>PC to be committed to VCS</i> .....	1
<i>Text messages</i> .....	1	<i>Notice board in Sandy Lane</i> .....	1
<i>Improve the English and the grammar</i> .....	1	<i>Use notice board better</i> .....	2
<i>Published theme for some PC meetings</i> .....	1	<i>Representative from each road</i> .....	1
<i>Review of last meeting and results achieved</i> .....	1	<i>Deal with issues not personalities</i> .....	1
<i>Make it more accessible</i> .....	2	<i>PC surgeries once or twice a month</i> .....	1

## Section 4 - Transport & Traffic

The results from the Village Character Statement Survey in 2000 identified the speed and volume of traffic, together with safety of access as the major concerns of the residents of the Parish and these issues are being addressed by the Parish Council and are therefore not included.....

32). If you are currently employed or self employed, where is your main place of work? (If you can also specify a postcode, it would be appreciated)

<i>Clifton</i> .....	34	<i>London</i> .....	2	<i>Taunton</i> .....	2
<i>Abbots Leigh</i> .....	22	<i>Bath</i> .....	0	<i>Winterbourne</i> .....	1
<i>Central Bristol (BS1, BS2)</i> .....	19	<i>Cheltenham</i> .....	3	<i>Clevedon</i> .....	2
<i>Knowle</i> .....	0	<i>The Mall BS34</i> .....	3	<i>Shirehampton BS11</i> .....	2
<i>Montpelier BS6</i> .....	3	<i>Brislington BS4</i> .....	3	<i>Hartcliffe BS13</i> .....	1
<i>St George BS5</i> .....	2	<i>Swindon</i> .....	1	<i>Southmead</i> .....	1
<i>Kingswood BS15</i> .....	3	<i>Royal Portbury BS20</i> .....	1	<i>Birmingham</i> .....	1
<i>Mangotsfield BS16</i> .....	2	<i>Ashton/Bedminster BS3</i> .....	4	<i>Portishead</i> .....	1
<i>Hengrove BS14</i> .....	1	<i>Westbury on Trym BS10</i> .....	3	<i>Weston-super-Mare</i> .....	1
<i>Wales</i> .....	1	<i>Wiltshire</i> .....	1		

33). How do you get there normally?

<i>Car</i> .....	110	<i>Cycle</i> .....	10	<i>Motorbike</i> .....	0
<i>Bus</i> .....	5	<i>Walk</i> .....	12		
<i>Taxi</i> .....	0	<i>Train</i> .....	3		

34). Do you own or have regular access to a car?

<i>Yes</i> .....	243	<i>No</i> .....	4	<i>I am a non-driver</i> .....	4
------------------	-----	-----------------	---	--------------------------------	---

35). How many motor vehicles does your household have use of?

<i>None</i> .....	2	<i>One</i> .....	68	<i>Two</i> .....	118	<i>Three</i> .....	51	<i>Four or more</i> ....	11
-------------------	---	------------------	----	------------------	-----	--------------------	----	--------------------------	----

## Section 4 - Transport & Traffic

- 36). The roads in the village are used by commercial vehicles, motorists, cyclists, pedestrians and horse-riders. Do you think that there are any particular locations where measures need to be taken to improve the safe and efficient use of the road by all these users?

30 mph limit through the village .....	49	
Rat run on Manor Road/Weir Lane / fit speed bumps ...	28	No turning facility at the end of Blackmoor Road ..... 1
Improve exit from Dennyview Road .....	18	A bypass for Abbots Leigh village .....
Pedestrian crossing by Dennyview .....	16	Traffic lights at Church Road (same as 5).....
Excessive speed along the A369 .....	15	Signs to exit on Harris Lane .....
Crossroads at the George.....	12	Improve junctions onto Beggar Bush Lane .....
Slow down the traffic coming into the village.....	11	The Pub car park.....
Ban commercial traffic from the A369 .....	10	Church Road, Sandy Lane, Harris Lane, Manor Road .
Traffic calming measures .....	9	Horse riders should stay on the road.....
Better hedge cutting .....	6	Pot holes in Sandy Lane.....
Traffic lights or mini roundabout at Manor Road/Church Road .....	5	Extend 40 mph limit towards Pill junction.....
One way system in Manor Lane/Weir Lane .....	5	Leigh Court to Blackmoor Road - poor footpath .....
Slow down traffic in Church Road.....	5	Overtaking opposite the end of Blackmoor Road.....
Poor footpaths Harris Lane to the George .....	5	Do not put speed bumps in Church Road.....
Parking in Church Road .....	4	Cycle track Portishead to Bristol .....
Visibility at sharp/narrow corners on Manor Road (fit mirrors).....	4	Ban vehicles from the lower end of Manor Lane .....
Pill junction - dangerous.....	4	Cars parked on cycle path .....
Lack of footpath on A369 from bus stop to forestry commission entrance .....	2	Coaches using Sandy Lane as a short cut .....
Speed activated warning sign .....	2	Better pavement between Home Farm Road and Church Road.....
Cyclists should use the cycle path! .....	2	Traffic camera at the junction of Beggar Bush Lane and A369 .....
A369 road surface needs improving.....	1	Lack of consideration for pedestrians in Sandy Lane ...

- 37). Do you use the cycle path to Clifton?  
 Yes.....94 No ..... 158

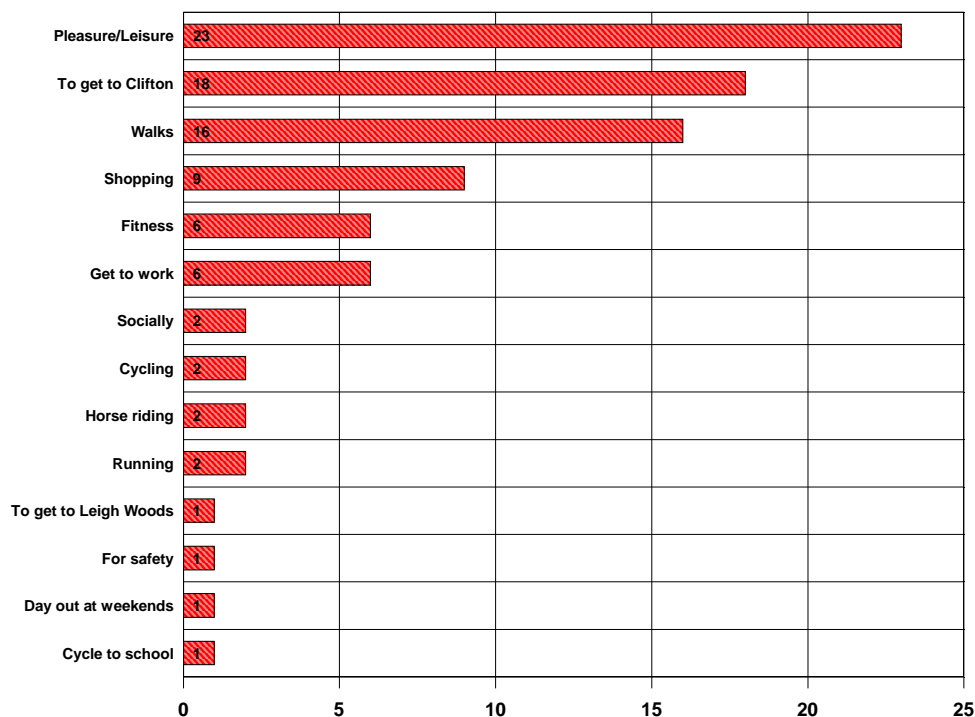
- 37).a If Yes, how often?  
 Regularly.....8 Daily .....1 Monthly..... 13  
 Weekly .....13 Occasionally .....26 Summer only ..... 2

## Section 4 - Transport & Traffic

### 37).b If Yes, for what purpose?

Walks .....	16	Pleasure/Leisure .....	23	Horse riding .....	2
To get to Leigh Woods .....	1	For safety.....	1	Get to work.....	6
To get to Clifton .....	18	Shopping .....	9	Too dangerous.....	0
Fitness .....	6	Cycling .....	2	Cycle to school .....	1
Socially .....	2	Day out at weekends .....	1	Running.....	2

If Yes, for what purpose?



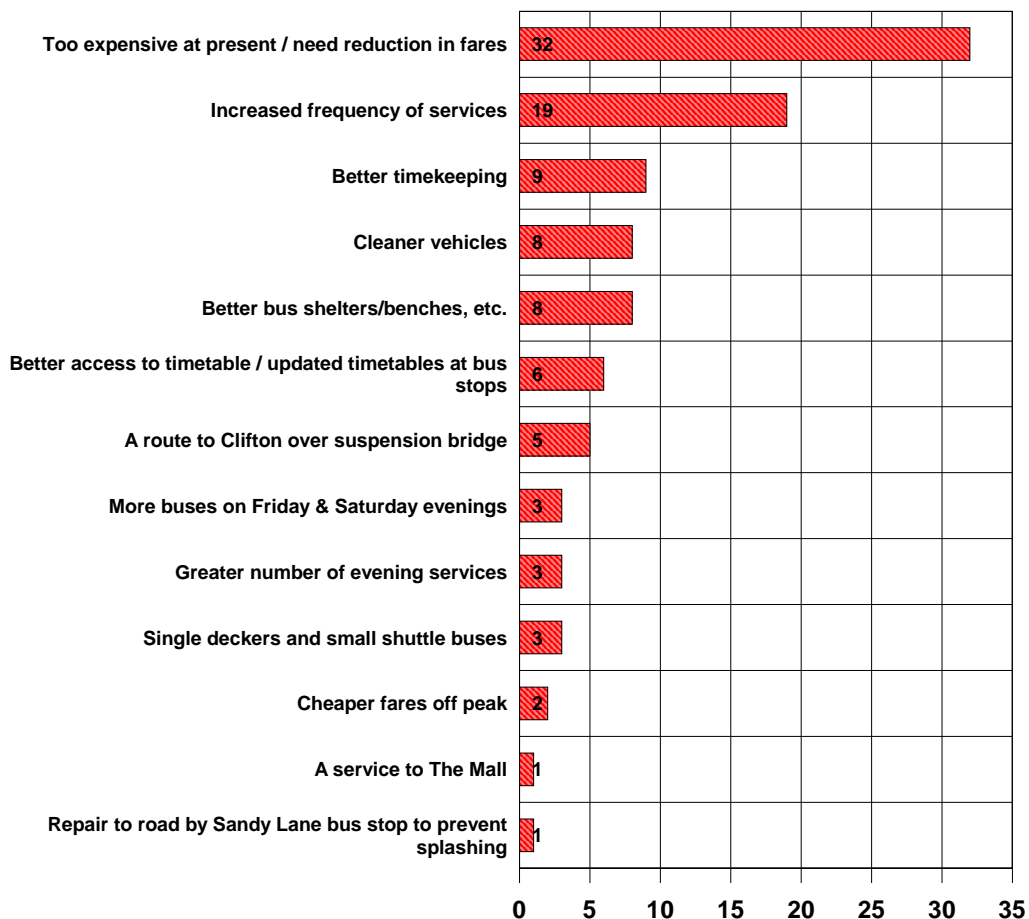
### 37).c Do you have any concerns about it?

People cycling on the road when they could be using the cycle path .	24	Inconsiderate cyclists.....	3	Too close to main road, very dangerous .....	1
Poor maintenance/lack of leaf cleaning .....	18	Waste of money.....	2	Lorries & cars very dangerous, only need to fall & you are under lorry.....	1
Traffic emerging from Gateways ..	7	North Road needs resurfacing.....	1	Traffic turning in to and out of Clifton College Sports Ground & cars parked on verge.....	1
People cycling on the pavement when they could be using the cycle path .....	1	Should be better lit.....	1	Getting onto and off of the path from Home Farm Road.....	1
Access not clearly indicated .....	2	Cars parked on the cycle path.....	3	Dangerous crossing to Home Farm Road .....	1
Improved and widened beyond Beggar Bush Lane .....	1	Extend cycle path to the Pill turning .....	2		

## Section 4 - Transport & Traffic

- 38). If the cycle path was extended to Pill would you use it?  
*Yes*.....88 *No* ..... 148
- 39). Do you ever use the bus service?  
*Daily/weekly use of the bus service*.....11 *I haven't used the bus service in the last 6 months* .... 157  
*Infrequent use of the bus service* .....84
- 40). If you use the bus service, how do you rate it?
- |                                   | <i>Good</i> | <i>Adequate</i> | <i>Poor</i> |
|-----------------------------------|-------------|-----------------|-------------|
| <i>Abbots Leigh to Bristol</i>    | 35          | 59              | 29          |
| <i>Abbots Leigh to Portishead</i> | 20          | 36              | 18          |
- 41). If you use the bus service, what improvements do you suggest?
- |   |    |   |   |
|---|----|---|---|
| <i>Too expensive at present / need reduction in fares</i> .....           | 32 |   |   |
| <i>Increased frequency of services</i> .....                              | 19 | 3 | 5 |
| <i>Better timekeeping</i> .....   | 9  | 3 | 1 |
| <i>Cleaner vehicles</i> .....   | 8  | 1 | 3 |
| <i>Better bus shelters/benches, etc.</i> .....                            | 8  | 6 | 2 |
| <i>Better access to timetable / updated timetables at bus stops</i> ..... | 6  |   |   |
| <i>A route to Clifton over suspension bridge</i> .....                    | 5  |   |   |
| <i>More buses on Friday &amp; Saturday evenings</i> .....                 | 3  |   |   |
| <i>Greater number of evening services</i> .....                           | 3  |   |   |
| <i>Single deckers and small shuttle buses</i> .....                       | 3  |   |   |
| <i>Cheaper fares off peak</i> .....                                       | 2  |   |   |
| <i>A service to The Mall</i> .....  | 1  |   |   |
| <i>Repair to road by Sandy Lane bus stop to prevent splashing</i> .....   | 1  |   |   |

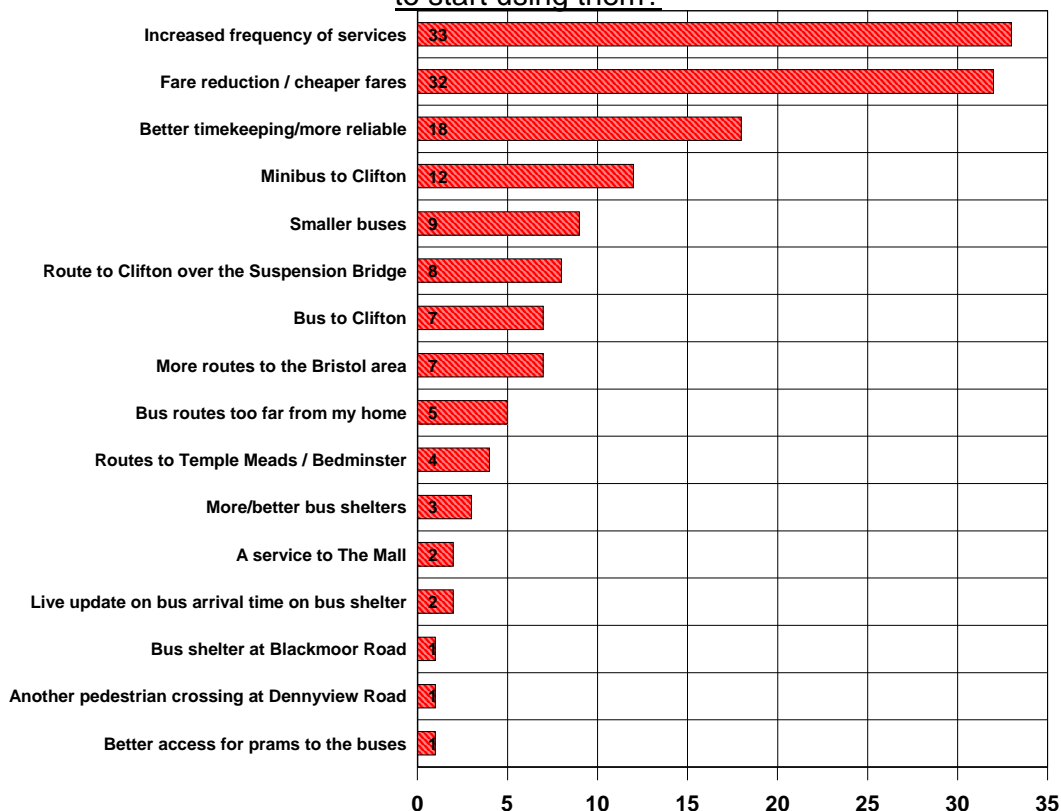
### If you use the bus service, what improvements do you suggest?



## Section 4 - Transport & Traffic

- 42). If you don't use the bus services, what would need to improve for you to start using them?
- |  |   |  |
|--|---|--|
| <i>Increased frequency of services</i> .....33             | <i>More routes to the Bristol area</i> .....7                 | <i>Another pedestrian crossing at Dennyview Road</i> ..... 1 |
| <i>Better timekeeping/more reliable</i> ... 18             | <i>A service to The Mall</i> .....2                           | <i>More/better bus shelters</i> ..... 3                      |
| <i>Fare reduction / cheaper fares</i> .....32              | <i>Bus routes too far from my home</i> ...5                   | <i>Better access for prams to the buses</i> ..... 1          |
| <i>Minibus to Clifton</i> ..... 12                         |   | <i>Bus to Clifton</i> ..... 7                                |
| <i>Smaller buses</i> .....9                                | <i>Live update on bus arrival time on bus shelter</i> ..... 2 | <i>Bus shelter at Blackmoor Road</i> .... 1                  |
| <i>Route to Clifton over the Suspension Bridge</i> ..... 8 | <i>Routes to Temple Meads / Bedminster</i> ..... 4            |  |

### Q42. If you don't use the bus services, what would need to improve for you to start using them?



- 43). Would you be interested in using a "dial-a-ride" Community Car service?  
*Yes*.....35 *No* ..... 122 *Don't know enough about it*..... 86
- 44). Would you be interested in a "School Run" minibus service?  
*Yes*.....31 *No* ..... 197
- 45). Would you support/use a Parish-owned minibus for scheduled trips to the supermarkets, Cribbs Causeway, Broadmead, Clifton etc?  
*Yes*.....36 *Occasionally* ..... 51 *No* ..... 154

## Section 5 - Living in the Parish

46). What do you like MOST about living in the Parish? (maximum of 3 items).	
Views / rural environment / access to countryside / wildlife.....	164 Privacy..... 7
Rural location and its closeness to the city.....	140 Upmarket / no council houses ..... 2
Friendly community / civilised / neighbourly .....	89 Pub ..... 4
Quiet / peaceful / atmosphere .....	73 My own house (and garden) ..... 8
Easy access to motorway .....	53 Lived here all my life / a long time..... 3
Small size community / living in a village .....	26 Convenience of airport ..... 3
Walks / footpaths .....	22 Nice place to live ..... 1
Village Hall / community activity .....	11 Old buildings ..... 3
Security / feeling safe .....	10 Character..... 3
Church community.....	9 No change ..... 1
Wide range of social activities .....	5 Heywood Surgery ..... 2
Families .....	1 Pill Shopping Centre..... 1
Size of garden.....	0 Bristol..... 1
No commercialism - industry .....	1 Views of Wales..... 2
Low population .....	2 Clean..... 1
No street lights .....	1 Abbots Pool ..... 2
Good place to bring up family .....	1 School field / playground ..... 2
Proximity to Ashton Park .....	2 Access to hospitals ..... 1
Safe roads (off A369) .....	4 No fast food / disco / shopping areas..... 1
Proactive community .....	3 Mountain biking ..... 1
	Low density housing ..... 2
	Lifestyle..... 1

## Section 5 - Living in the Parish

### 47). Is there anything you DISLIKE about living in the Parish? (maximum of 3 items).

Volume, speed and noise of traffic / access onto A369 .....	110		
Lack of shop/ PO .....	39	Light pollution (from Bristol).....	2
No drainage / smell of septic tanks .....	17	Local children (in Dennyview) .....	1
Lack of community / feeling isolated / lack of village events .....	16	Poor bus service.....	1
A369 bisects the village .....	15	Should be Bristol Council.....	1
Big, ugly houses / inappropriate development .....	11	Lack of contact with neighbours .....	1
Speeding on Church Road / side roads .....	10	Threat of telephone masts.....	1
Garden rubbish burning / bonfires .....	10	Rabbits.....	1
No gas .....	9	Neighbourhood Watch could be more effective .....	1
Too middle class / too posh / not mixed socioeconomics groups.....	8	Abbots Pool dumping of rubbish.....	1
HGVs .....	7	Footpaths are disappearing / Manor Road footpath ..	2
Litter .....	6	Queue to cross suspension bridge .....	1
Danger of overgrown hedges.....	6	Village politics.....	1
Pavement parking / car parking .....	6	Lack of transparency of Parish Council .....	1
Dumping of cars / fly tipping / car crime and vandalism .....	6	Transport / travel / isolation issues.....	2
Church Road elitism .....	5	Noise from Leigh Court .....	1
Overhead cables .....	5	Too much shooting of wildlife .....	1
Ashton Court Community Festival.....	5	Burglary .....	1
Loss of true villagers (influx of townies).....	4	Sports Club development.....	1
Manor Road as a rat run.....	3	Lack of village focus / meeting place .....	2
Holes in road / condition of roads .....	6	North Somerset Council.....	1
Development pressures.....	4	Loss of farms.....	1
Cost of Suspension Bridge .....	2	Dependency on the car .....	2
Village used as a dormitory / commuters don't mix ....	2	Local apathy .....	1
Lack of village school .....	4	Pollution (Avonmouth) .....	3
Mountain bikes on footpaths .....	3	Intolerance of new development ideas .....	1
Night time joy riders .....	1	Lack of crossing at Dennyview Road.....	1
Lack of diversity.....	2	Difficulty with pushchairs.....	1
Peacocks .....	1	Traffic into Bristol (from a users perspective) .....	2
Pub has been ruined / no good.....	4	No cable .....	1
Fear of crime .....	1	Low flying aircraft .....	1
Political impotence .....	1	Irrepressible landowner.....	1
Dog barking .....	2	Lack of youth facilities .....	3
Lack of street lights .....	5	Lack of maintained footway / cycleway .....	3
Lack of Village Hall car parking .....	5	Inadequate footpaths .....	1
Changes to the Old School field .....	2	Used footpaths by horses.....	1
Too many fireworks.....	2	Lack of bus service to Clifton.....	1
Leylandii hedges .....	1		

## Section 5 - Living in the Parish

48). You have already told us your views and ideas about a lot of things, BUT if you had to choose a maximum of THREE IDEAS from these and any others that would make it a better place for you, what would they be?

Speed limits - 30 mph .....	36		
Village shop / PO.....	35	More considerate car parking on Manor Road by the George .....	1
Less traffic on A369.....	24	Roundabout at George .....	2
No changes / no more houses / development / retain open rural aspect / no infill.....	20	Park & Ride.....	2
Mains drainage .....	17	Children's clubs .....	3
Traffic calming .....	16	Maintain stone walls.....	1
Quieter road surface .....	14	Village swimming pool .....	2
Save the pub / another pub / improve the pub .....	13	Litter clearance by NSC.....	3
Bypass / move A369 / new M5 feeder road .....	13	Cheaper beer at the George .....	1
Prohibit HGVs on A369 .....	13	Farmers market .....	5
Maintenance of pavements / footways .....	10	Bus shelter / bench at Sandy Lane / Leigh Court bus stop .....	2
Doctor's surgery.....	2	Manor Lane - 1 way system, rat runs.....	5
Resident village policeman / greater police presence / reduce crime .....	4	Good restaurant .....	1
Footpath from Dennyview to Manor Road / footpaths away from A369.....	9	De-limit A369 outside village .....	1
Restrict/outlaw garden rubbish burning .....	5	Better maintenance of trees and hedges (see also 61)..	4
More mixed housing / lower cost housing (see also 28)	8	Restore Church Road elitism .....	2
Greater consideration to other residents .....	1	Good cycling code for shared use path .....	1
Mains gas.....	6	Underground cabling.....	5
Numbering of houses .....	1	Tree and hedge maintenance (see also 57) .....	2
Open up old footpaths .....	1	Extend burial ground .....	2
Open up turning space in Blackmoor Road .....	1	Tree planting on A369 to screen noise .....	2
A369 junctions / improve sight lines.....	2	Closer refuse collection site to house .....	2
Mobile shop (see also 38) .....	2	Reduce light pollution at Clifton College sports ground	2
School.....	9	Retain the church (see 46) .....	1
Community spirit .....	7	Mountain bike restriction on woodland footpaths .....	2
Better services from North Somerset Council .....	2	Better links with, and more children at St. Katherine's School.....	2
Better public transport .....	5	New and better use of skittle alley .....	1
Litter in St Katherine's School.....	1	Restrict use of mechanical garden tools on Sunday and evenings .....	2
Better planning controls and enforcement .....	8	Encourage people to put refuse out on appropriate day	1
Clear cycle path .....	1	Encourage residents to beautify their plots.....	1
Cafe .....	2	More "country" people, less townies .....	2
Speed camera on A369 (see also 7).....	5	More considerate driving on lanes .....	2
Abbots Pool improvement .....	3	Interactive speed-activated sign at Dennyview Road (see also 3) .....	2
Limited / no changes to the playing field.....	3	Sheltered housing .....	2
More access to housing in low income groups (see also 13)	1	Improved playing space .....	2
No more mobile phone masts .....	2	A369 crossing at Dennyview Road .....	6
Open Portishead-Bristol passenger line .....	7	More community events .....	1
Improvements (i.e. surfacing) on side roads.....	7	Reliable electricity supply.....	1
More development to create community .....	1	Earlier post .....	1
Village Hall car parking .....	4	Outside bar.....	1
Greater / improved street lighting .....	3	Tennis court (see 91).....	1
More litter bins .....	2	Encourage agriculture .....	1
Local natural history info. leaflet .....	1	Green waste recycling .....	1
Boundary changes.....	1	Conservation area .....	1
Control dog barking .....	2	Reduction in fly tipping and dumped cars .....	1
Full-time vicar (see also 66) .....	1	Tennis court (see 86).....	2
		Evening classes and adult activities in VH .....	1

## Section 6 - Natural Environment

49). Which is the MOST irritating problem in the Parish

<i>Air pollution from traffic</i> .....	17	<i>Telephone masts</i> .....	6
<i>Air pollution from industry</i> .....	1	<i>Litter</i> .....	7
<i>Road traffic noise</i> .....	72	<i>Dog fouling</i> .....	6
<i>Antisocial noise</i> .....	4	<i>Fly-tipping</i> .....	4
<i>Aircraft noise</i> .....	3	<i>Overhead wires / cables</i> .....	11
<i>Pollution from artificial light</i> .....	11	<i>Dumped cars</i> .....	7
<i>Agricultural smells</i> .....	0	<i>Damage to roadside banks and road surfaces</i> .....	14
<i>Water pollution - septic tanks</i> .....	12	<i>Maintenance of verges and footways</i> .....	21

## Section 6 - Natural Environment

50). How often do you use any of the footpaths or bridleways in the Parish?

	Daily	Weekly	Infrequently	Never
Footpaths?	60	94	83	11
Bridleways on foot?	32	70	94	27
Bridleways on horseback?	5	5	5	165
Bridleways on mountain bikes?	2	16	35	134

51). Are you satisfied with the condition of the footpaths, stiles and signs?

Yes..... 152 No ..... 82

51a). If no, what do you see as the problem areas?

Loss of path adjacent to Manor Road .....	1
Overgrown trees / poor maintenance / litter .....	29
Paths are cut up by mountain bikes .....	11
A369 overgrown.....	9
Stiles need repairing .....	9
Footpath between Manor Road and Manor Lane .....	1
Lack of footpaths .....	2
Ugly signage .....	0
Abbots Pool to Failand.....	1
Abbots Pool .....	1
Manor Road .....	2
Path to Pill is overgrown .....	2
Cutting between Harris Lane and Sandy Lane.....	1
The 3 stile on footpath from Glen House to Green Lane.....	1
Fallen trees .....	1
Excessive signage .....	1
Horse damage .....	3
Cattle damage .....	1
Abbots Pool's bridleways are muddy .....	1
Paths in Leigh Woods are too worn - allowing cars and motorcycles - make entrance smaller .....	0
Poor signage.....	2
Signage needs repairing.....	1
Insufficient footpaths to walk dogs.....	0
Stiles are not pet friendly.....	1
More footpaths needed .....	1
Footpath on Pill Road in front of school.....	1
Footpaths need clearing.....	4

## Section 6 - Natural Environment

52). Suggestions have been made for the creation of new footpaths, eg linking Sandy Lane to Dennyview Road. Which areas would you like to see linked?

<i>Sandy Lane to Dennyview</i> .....	29	<i>Sandy Lane to Wear Lane</i> .....	1
<i>Church Road to Leigh Court / Brackenwood</i> .....	31	<i>Path to Pill, not along A369</i> .....	1
<i>Church Road to Leigh Woods</i> .....	10	<i>Blackmoor Lane to Ham Green</i> .....	1
<i>Church Road to Stoke Leigh Woods</i> .....	2	<i>Church Road to Paradise Bottom</i> .....	6
<i>Church Road to River Avon</i> .....	1	<i>Upper Farm to Abbots Leigh Cricket Club</i> .....	2
<i>A369 footway for cycling to St. Katherine's / Ham Green</i> .....	1	<i>Old School Field to Oakwood Cottage (pavement Church Road)</i> .....	2
<i>Bus stop on A369 to Forestry Commission</i> .....	1	<i>Ham Green to Leigh Woods (reopened)</i> .....	2
<i>Leigh Court / Brackenwood to Blackmoor</i> .....	5	<i>Manor Road to AL Cricket Club</i> .....	1
<i>Sandy Lane to Manor Road</i> .....	3	<i>George to Dennyview</i> .....	2
<i>Dennyview to anywhere</i> .....	1	<i>Dennyview to Abbots Pool</i> .....	1
<i>A369 to Manor Lane</i> .....	1	<i>Dennyview A369 crossing</i> .....	3
<i>Footpath to Haberflow Road</i> .....	1	.....	0
<i>Blackmoor Lane to River Avon</i> .....	1	<i>Along valley from bottom of Old School Field</i> .....	1
<i>Mall to Abbots Leigh</i> .....	1		

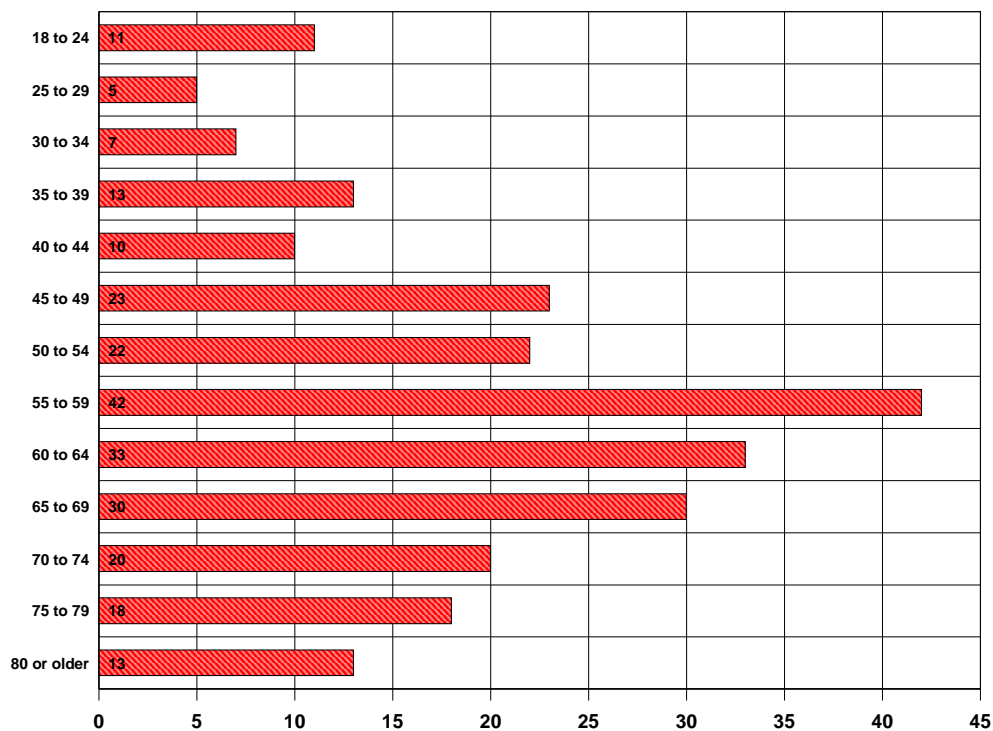
## Section 8 - Background information about you..

To help in analysing the results of this survey, we would appreciate knowing a little more information about you.... This information will NOT be used to identify you, merely to segment replies into appropriate groups such as gender and age.

54). Are you...  
     Male.....119 Female ..... 132

55). What is your age?  
     18 to 24.....11 55 to 59 ..... 42  
     25 to 29.....5 60 to 64 ..... 33  
     30 to 34.....7 65 to 69 ..... 30  
     35 to 39.....13 70 to 74 ..... 20  
     40 to 44.....10 75 to 79 ..... 18  
     45 to 49.....23 80 or older ..... 13  
     50 to 54.....22

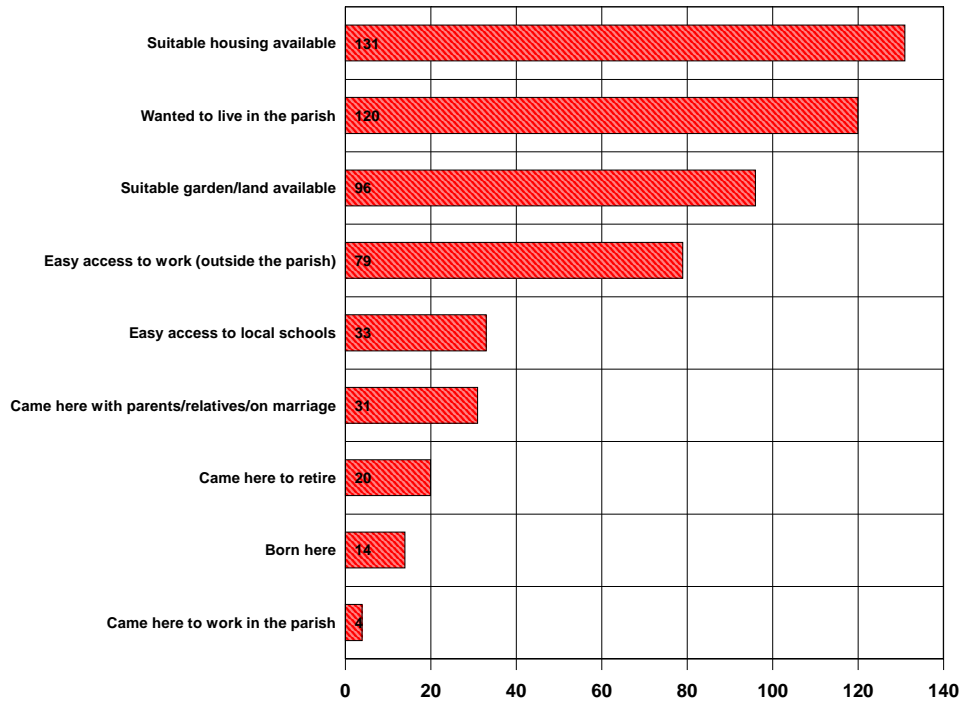
Age of adult respondent



## Section 8 - Background information about you..

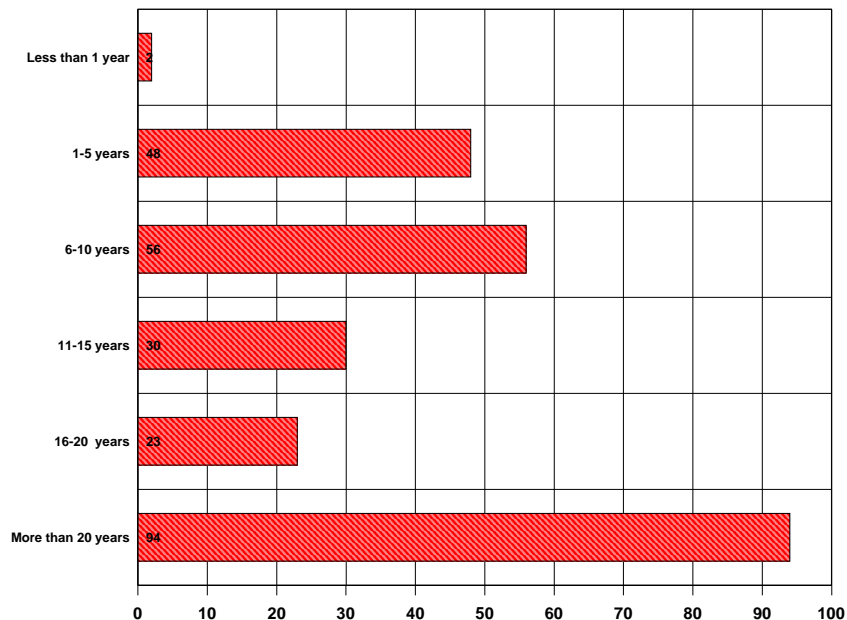
- 56). How did you come to live in the Parish? (Tick all that apply).
- |  |    |                                     |     |
|--|----|-------------------------------------|-----|
| Born here.....                                     | 14 | Came here to retire .....           | 20  |
| Came here to work in the parish.....               | 4  | Wanted to live in the parish.....   | 120 |
| Easy access to work (outside the parish) .....     | 79 | Suitable housing available .....    | 131 |
| Easy access to local schools.....                  | 33 | Suitable garden/land available..... | 96  |
| Came here with parents/relatives/on marriage ..... | 31 |                                     |     |

How did you come to live in the Parish?



- 57). How long have you lived in the Parish?
- |                        |    |                          |    |
|------------------------|----|--------------------------|----|
| Less than 1 year ..... | 2  | 11-15 years.....         | 30 |
| 1-5 years .....        | 48 | 16-20 years.....         | 23 |
| 6-10 years .....       | 56 | More than 20 years ..... | 94 |

How long have you lived in the Parish?

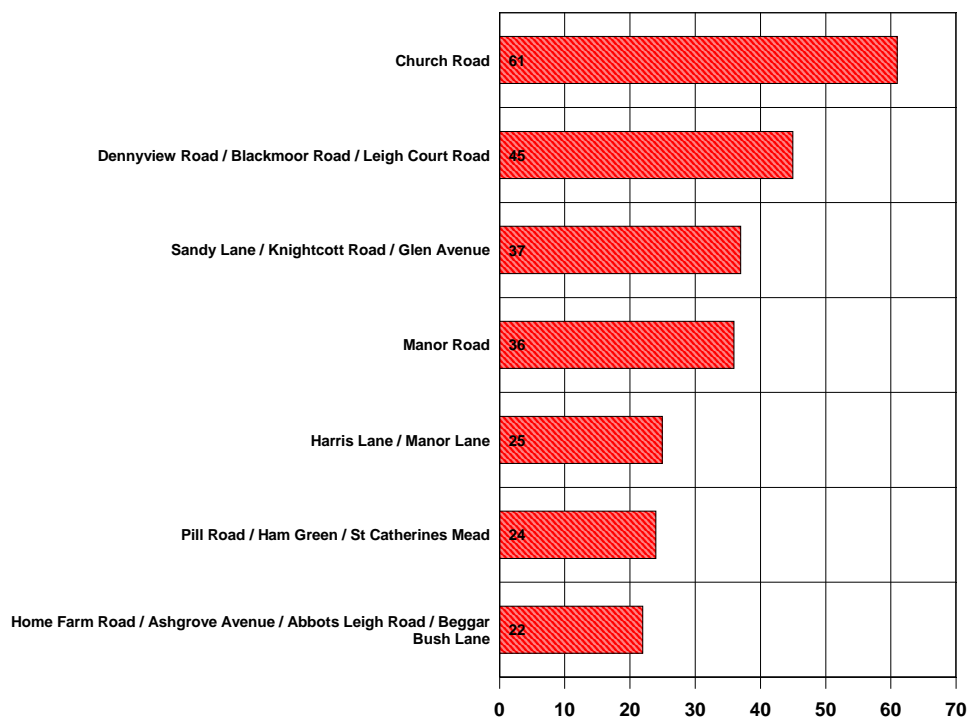


**Section 8 - Background information about you..**

58). Which area do you live in?

Dennyview Road / Blackmoor Road / Leigh Court Road .....	45	Manor Road.....	36
Pill Road / Ham Green / St Catherines Mead.....	24	Harris Lane / Manor Lane .....	25
Sandy Lane / Knightcott Road / Glen Avenue .....	37	Home Farm Road / Ashgrove Avenue / Abbots Leigh Road / Beggar Bush Lane .....	22
Church Road.....	61		

Which area do you live in?



59). How many live in your house?

Adults (18 plus)	Total of 517 adults in 247 households. Average= 2.1. Min=1. Max=5.
Students away from home	Total of 44 students in 32 households. Average = 1.38. Min=1. Max=3.
Young people (11-17)	Total of 43 11-17 year olds in 31 households. Average = 1.39. Min=1. Max=2.
Children (5-10)	Total of 17 children (5-10) in 12 households. Average=1.41. Min=1. Max=2.
Children (0-4)	Total of 24 children (0-4) in 16 households. Average=1.5. Min=1. Max=2.

